

SAMSUNG

SM-G130HN

User Manual

Table of Contents

Read me first

Getting started

- 7 Package contents
- 8 Device layout
- 10 Using the SIM or USIM card and battery
- 15 Using a memory card
- 17 Turning the device on and off
- 18 Locking and unlocking the screen

Basics

- 19 Using the touch screen
- 22 Home screen layout
- 25 Notifications panel
- 26 Opening apps
- 27 Installing or uninstalling apps
- 29 Entering text
- 31 Screen capture
- 31 My Files
- 32 Viewing help information

Network connectivity

- 33 Mobile data
- 33 Wi-Fi
- 35 Tethering and Mobile hotspot
- 37 Internet

Personalising

- 39 Managing the Home and Apps screens
- 41 Setting wallpaper and ringtones
- 42 Changing the screen lock method
- 43 Transferring data from your previous device
- 43 Setting up accounts

Phone

- 44 Making calls
- 46 Receiving calls
- 47 Options during calls

Contacts

- 48 Adding contacts
- 49 Managing contacts

Messages & email

- 51 Messages
- 53 Email

Camera

- 56 Basic shooting
- 57 Shooting modes
- 58 Camera settings

Gallery

- 60 Viewing photos or videos

Multimedia

- 62 Video

Useful apps and features

- 63 S Planner
- 65 Calculator
- 66 ChatON
- 67 Clock
- 69 Downloads
- 69 Games
- 70 Memo
- 71 Radio
- 73 Voice Recorder
- 74 Google apps

Connecting with other devices

- 77 Bluetooth
- 79 Wi-Fi Direct
- 81 NFC
- 83 Mobile printing

Device & data manager

- 84 Upgrading the device
- 85 Transferring files between the device and a computer
- 86 Backing up and restoring data
- 87 Performing a data reset

Settings

- 88 About Settings
- 88 WIRELESS AND NETWORKS
- 92 DEVICE
- 96 PERSONAL
- 100 ACCOUNTS
- 100 SYSTEM

Accessibility

- 102 About Accessibility
- 103 Setting the accessibility shortcut
- 103 Voice feedback (TalkBack)
- 113 Changing the font size
- 113 Magnifying the screen
- 113 Turning off all sounds
- 114 Mono audio
- 114 Setting tap and hold delay options
- 114 Interaction control
- 115 Auto rotate screen
- 115 Screen timeout
- 115 Answering or ending calls
- 116 Using other useful features

Troubleshooting

Read me first

Please read this manual before using the device to ensure safe and proper use.

- Descriptions are based on the device's default settings.
- Some content may differ from your device depending on the region, service provider, or device's software.
- Content (high quality content) that requires high CPU and RAM usage will affect the overall performance of the device. Apps related to the content may not work properly depending on the device's specifications and the environment that it is used in.
- Samsung is not liable for performance issues caused by apps supplied by providers other than Samsung.
- Samsung is not liable for performance issues or incompatibilities caused by edited registry settings or modified operating system software. Attempting to customise the operating system may cause the device or apps to work improperly.
- Software, sound sources, wallpapers, images, and other media provided with this device are licensed for limited use. Extracting and using these materials for commercial or other purposes is an infringement of copyright laws. Users are entirely responsible for illegal use of media.
- You may incur additional charges for data services, such as messaging, uploading and downloading, auto-syncing, or using location services depending on your data plan. For large data transfers, it is recommended to use the Wi-Fi feature.
- Default apps that come with the device are subject to updates and may no longer be supported without prior notice. If you have questions about an app provided with the device, contact a Samsung Service Centre. For user-installed apps, contact service providers.
- Modifying the device's operating system or installing softwares from unofficial sources may result in device malfunctions and data corruption or loss. These actions are violations of your Samsung licence agreement and will void your warranty.

Instructional icons



Warning: situations that could cause injury to yourself or others



Caution: situations that could cause damage to your device or other equipment



Note: notes, usage tips, or additional information

Getting started

Package contents

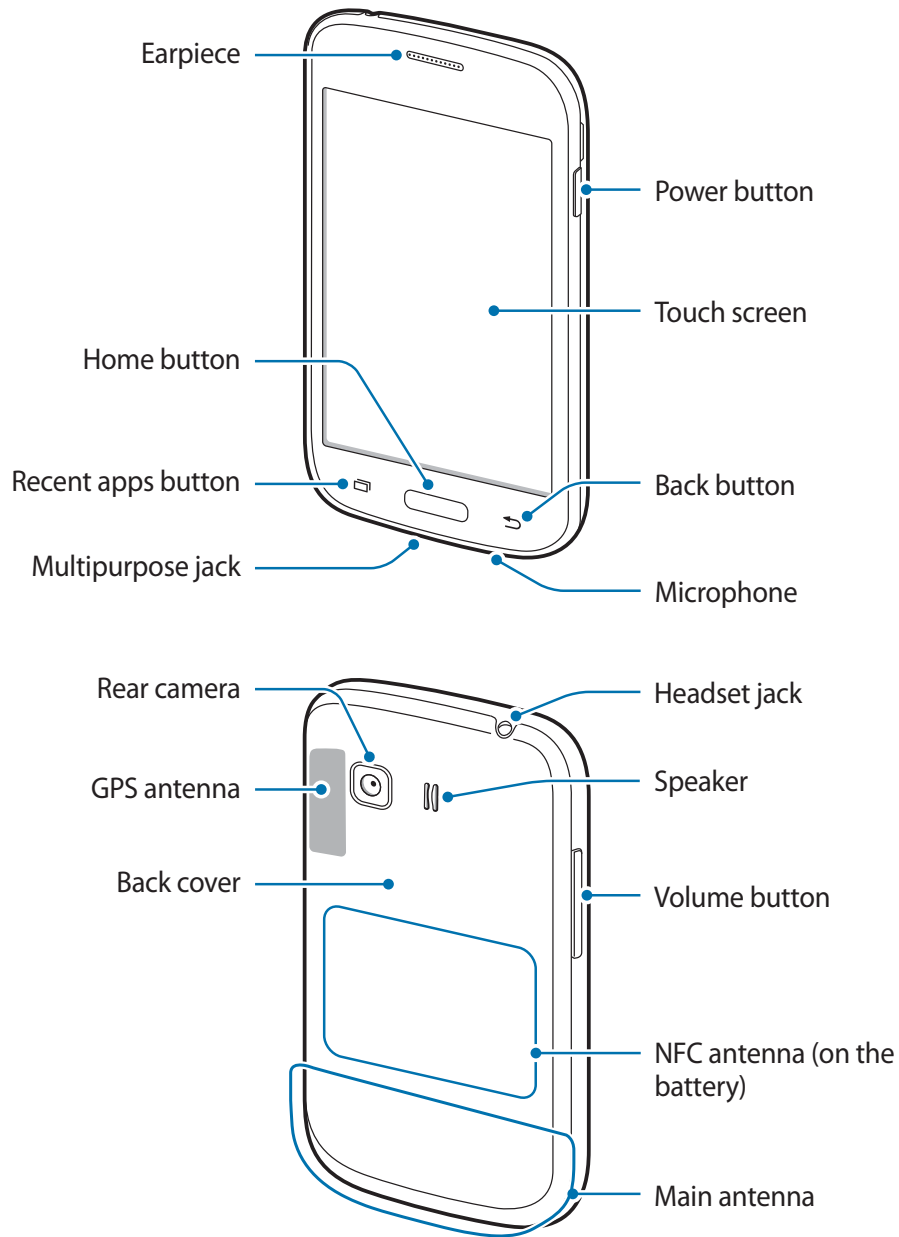
Check the product box for the following items:

- Device
- Battery
- Quick start guide








- The items supplied with the device and any available accessories may vary depending on the region or service provider.
- The supplied items are designed only for this device and may not be compatible with other devices.
- Appearances and specifications are subject to change without prior notice.
- You can purchase additional accessories from your local Samsung retailer. Make sure they are compatible with the device before purchase.
- Availability of all accessories is subject to change depending entirely on manufacturing companies. For more information about available accessories, refer to the Samsung website.

Device layout



- Do not cover the antenna area with your hands or other objects. This may cause connectivity problems or drain the battery.
- Do not use a screen protector. This causes sensor malfunctions.
- Do not allow water to contact the touch screen. The touch screen may malfunction in humid conditions or when exposed to water.

Buttons

Button	Function
 Power	<ul style="list-style-type: none">• Press and hold to turn the device on or off.• Press to turn on or lock the screen.
 Recent apps	<ul style="list-style-type: none">• Tap to open the list of recent apps.• Tap and hold to access additional options for the current screen.
 Home	<ul style="list-style-type: none">• Press to turn on the screen while the screen is locked.• Press to return to the Home screen.• Press and hold to launch Google.
 Back	<ul style="list-style-type: none">• Tap to return to the previous screen.
 Volume	<ul style="list-style-type: none">• Press to adjust the device volume.

Using the SIM or USIM card and battery

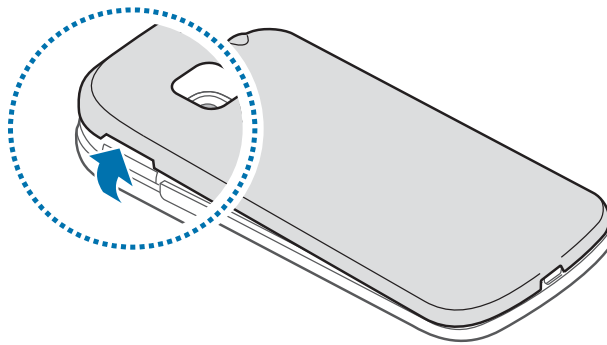
Installing the SIM or USIM card and battery

Insert the SIM or USIM card provided by the mobile telephone service provider, and the included battery.



Only microSIM cards work with the device.

- 1 Remove the back cover.

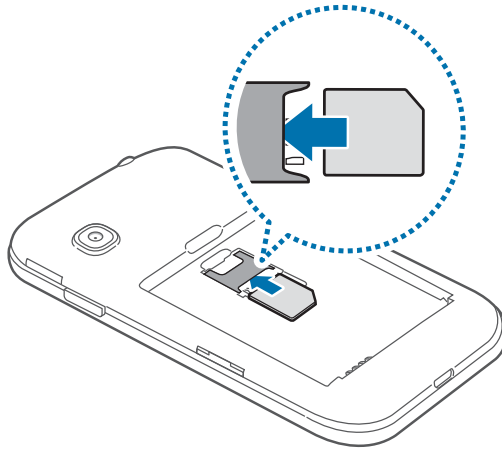


Be careful not to damage your fingernails when you remove the back cover.



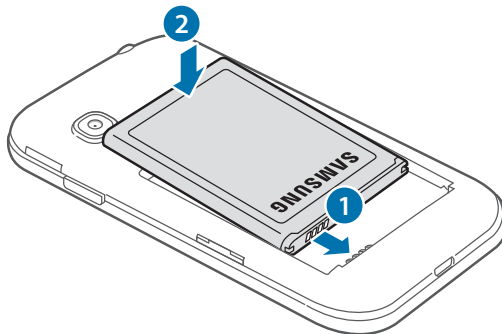
Do not bend or twist the back cover excessively. Doing so may damage the cover.

2 Insert the SIM or USIM card with the gold-coloured contacts facing downwards.

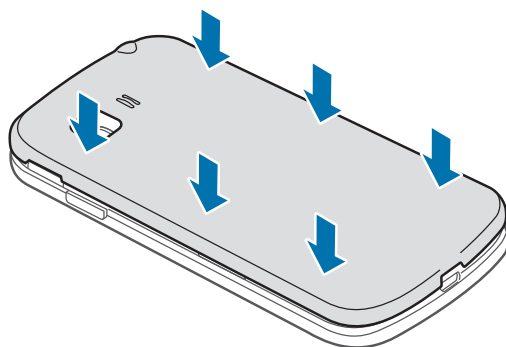


- Do not insert a memory card into the SIM card slot. If a memory card happens to be lodged in the SIM card slot, take the device to a Samsung Service Centre to remove the memory card.
- Use caution not to lose or let others use the SIM or USIM card. Samsung is not responsible for any damages or inconveniences caused by lost or stolen cards.

3 Insert the battery.

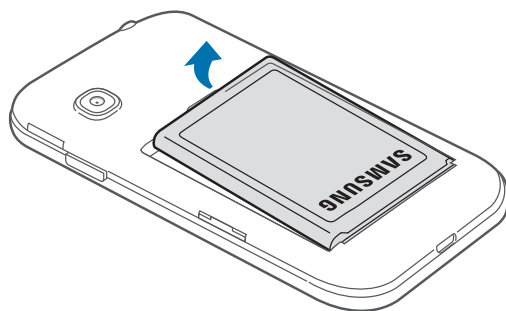


- 4 Replace the back cover.

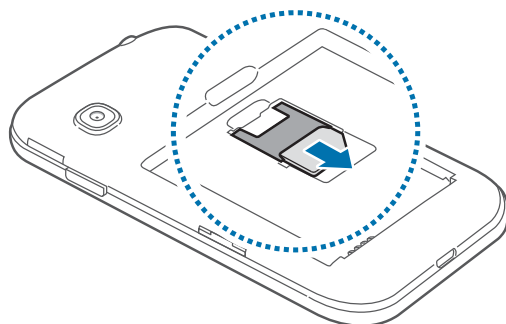


Removing the SIM or USIM card and battery

- 1 Remove the back cover.
- 2 Pull out the battery.



- 3 Pull out the SIM or USIM card.



Charging the battery

Use the charger to charge the battery before using it for the first time. A computer can be also used to charge the battery by connecting them via the USB cable.

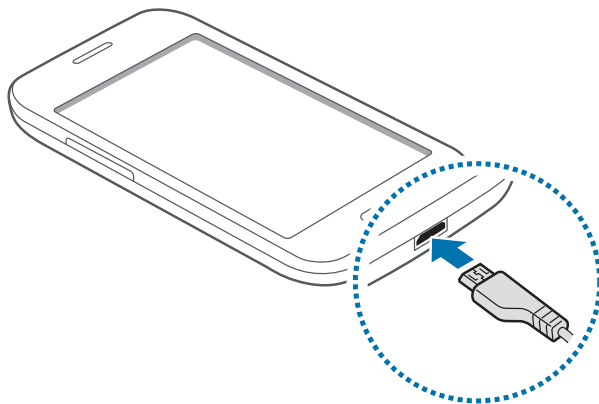


Use only Samsung-approved chargers, batteries, and cables. Unapproved chargers or cables can cause the battery to explode or damage the device.



- When the battery power is low, the battery icon appears empty.
- If the battery is completely discharged, the device cannot be turned on immediately when the charger is connected. Allow a depleted battery to charge for a few minutes before turning on the device.
- If you use multiple apps at once, network apps, or apps that need a connection to another device, the battery will drain quickly. To avoid disconnecting from the network or losing power during a data transfer, always use these apps after fully charging the battery.

Plug the small end of the charger into the multipurpose jack of the device, and plug the large end of the charger into an electric socket.



Connecting the charger improperly may cause serious damage to the device. Any damage caused by misuse is not covered by the warranty.



- The device can be used while it is charging, but it may take longer to fully charge the battery.
- If the device receives an unstable power supply while charging, the touch screen may not function. If this happens, unplug the charger from the device.
- While charging, the device may heat up. This is normal and should not affect the device's lifespan or performance. If the battery gets hotter than usual, the charger may stop charging.
- If the device is not charging properly, take the device and the charger to a Samsung Service Centre.

After fully charging, disconnect the device from the charger. First unplug the charger from the device, and then unplug it from the electric socket.



Do not remove the battery before removing the charger. This may damage the device.



To save energy, unplug the charger when not in use. The charger does not have a power switch, so you must unplug the charger from the electric socket when not in use to avoid wasting power. The charger should remain close to the electric socket and easily accessible while charging.

Reducing the battery consumption

Your device provides options that help you save the battery power. By customising these options and deactivating features in the background, you can use the device longer between charges:

- When you are not using the device, switch to sleep mode by pressing the Power button.
- Close unnecessary apps using the task manager.
- Deactivate the Bluetooth feature.
- Deactivate the Wi-Fi feature.
- Deactivate auto-syncing of apps.
- Decrease the backlight time.
- Decrease the screen brightness.

Using a memory card

Installing a memory card

Your device accepts memory cards with maximum capacities of 32 GB. Depending on the memory card manufacturer and type, some memory cards may not be compatible with your device.

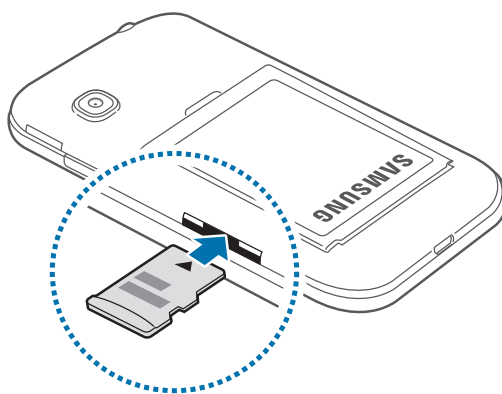


- Some memory cards may not be fully compatible with the device. Using an incompatible card may damage the device or the memory card, or corrupt the data stored in it.
- Use caution to insert the memory card right-side up.



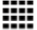
- The device supports the FAT file system for memory cards. When inserting a card formatted in a different file system, the device asks to reformat the memory card.
- Frequent writing and erasing of data shortens the lifespan of memory cards.
- When inserting a memory card into the device, the memory card's file directory appears in the **My Files** → **All** → **SD card** folder.

- 1 Remove the back cover.
- 2 Insert a memory card with the gold-coloured contacts facing downwards.
- 3 Push the memory card into the slot until it locks in place.



- 4 Replace the back cover.

Removing the memory card

Before removing the memory card, first unmount it for safe removal. On the Home screen, tap  → **Settings** → **Storage** → **Unmount SD card**.

- 1 Remove the back cover.
- 2 Push the memory card until it disengages from the device, and then pull it out.
- 3 Replace the back cover.



Do not remove the memory card while the device is transferring or accessing information. Doing so can cause data to be lost or corrupted or can damage the memory card or device. Samsung is not responsible for losses that result from the misuse of damaged memory cards, including the loss of data.

Formatting the memory card

A memory card formatted on a computer may not be compatible with the device. Format the memory card on the device.

On the Home screen, tap  → **Settings** → **Storage** → **Format SD card** → **Format SD card** → **Erase everything**.



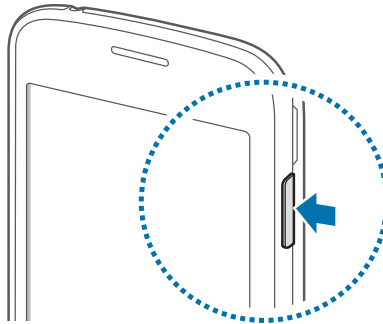
Before formatting the memory card, remember to make backup copies of all important data stored in the device. The manufacturer's warranty does not cover loss of data resulting from user actions.

Turning the device on and off

Press and hold the Power button for a few seconds to turn on the device.

When you turn on your device for the first time or after performing a data reset, follow the on-screen instructions to set up your device.

To turn off the device, press and hold the Power button, and then tap **Power off**.

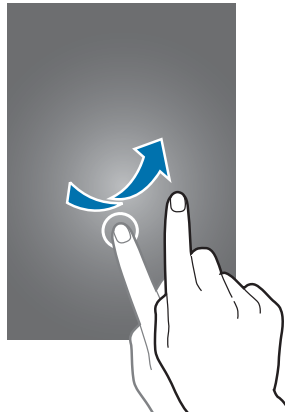


Follow all posted warnings and directions from authorised personnel in areas where the use of wireless devices is restricted, such as aeroplanes and hospitals.

Locking and unlocking the screen

Pressing the Power button turns off the screen and locks it. Also, the screen turns off and automatically locks if the device is not used for a specified period.

To unlock the screen, press the Power button or the Home button and flick your finger in any direction within the unlock screen area.



You can change the unlock code to unlock the screen. Refer to [Changing the screen lock method](#) for more information.

Basics

Using the touch screen



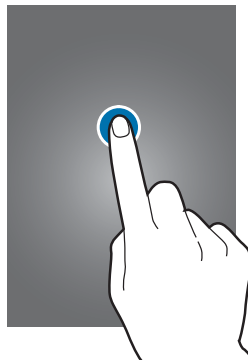
- Do not allow the touch screen to come into contact with other electrical devices. Electrostatic discharges can cause the touch screen to malfunction.
- To avoid damaging the touch screen, do not tap it with anything sharp or apply excessive pressure to it with your fingertips.



- The device may not recognise touch inputs close to the edges of the screen, which are outside of the touch input area.
- Leaving the touch screen idle for extended periods may result in afterimages (screen burn-in) or ghosting. Turn off the touch screen when you do not use the device.
- It is recommended to use fingers when you use the touch screen.

Tapping

To open an app, to select a menu item, to press an on-screen button, or to enter a character using the keyboard on the screen, tap it with a finger.



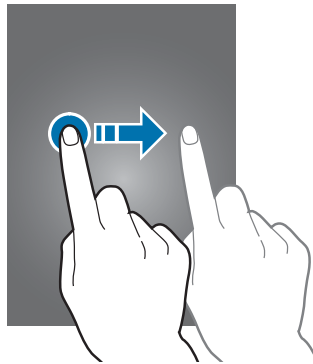
Tapping and holding

Tap and hold an item or the screen for more than 2 seconds to access available options.



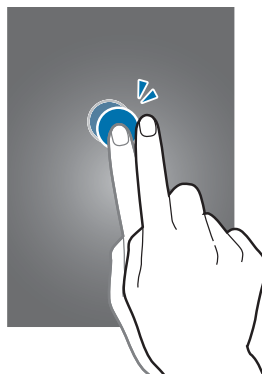
Dragging

To move an item, tap and hold it and drag it to the target position.



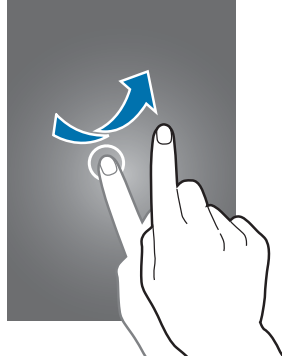
Double-tapping

Double-tap on a webpage or image to zoom in. Double-tap again to return.



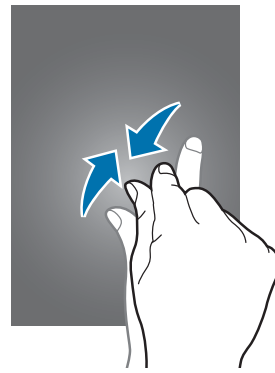
Flicking

Flick left or right on the Home screen or the Apps screen to see another panel. Flick up or down to scroll through a webpage or a list of items, such as contacts.



Spreading and pinching

Spread two fingers apart on a webpage, map, or image to zoom in a part. Pinch to zoom out.

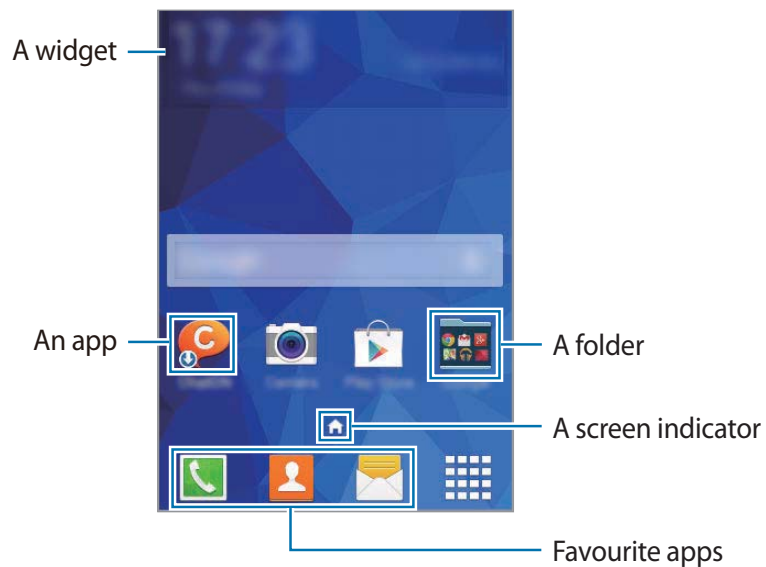


Home screen layout

Home screen

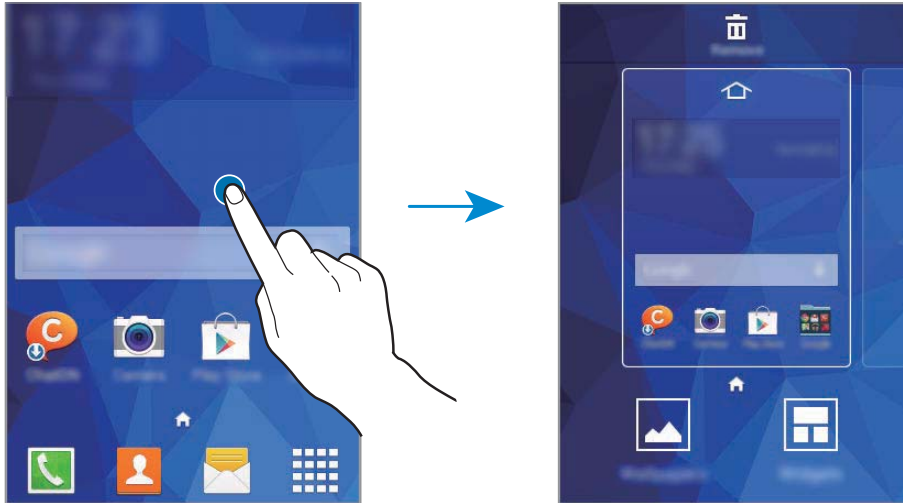
The Home screen is the starting point for accessing all of the device's features. It displays widgets, shortcuts to apps, and more. Widgets are small apps that launch specific app functions to provide information and convenient access on your Home screen.

To view other panels, scroll left or right, or tap one of the screen indicators at the bottom of the screen. To customise the Home screen, refer to [Managing the Home screen](#).




Home screen options

On the Home screen, tap and hold an empty area, or pinch your fingers together to access the available options.



Apps screen

The Apps screen displays icons for all apps, including newly installed apps.

On the Home screen, tap  to open the Apps screen. To view other panels, scroll left or right, or select a screen indicator at the bottom of the screen. To customise the Apps screen, refer to [Managing the Apps screen](#).



Indicator icons

Indicator icons appear on the status bar at the top of the screen. The icons listed in the table below are most common.



The status bar may not appear at the top of the screen in some apps. To display the status bar, drag down from the top of the screen.

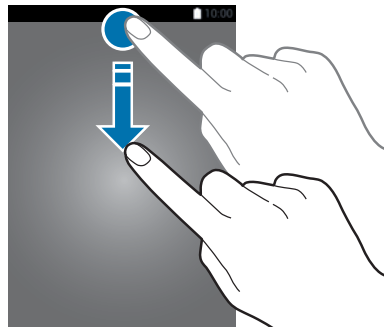
Icon	Meaning
	No signal
	Signal strength
	Roaming (outside of normal service area)
	GPRS network connected
	EDGE network connected
	UMTS network connected
	HSDPA network connected
	HSPA+ network connected
	Wi-Fi connected
	Bluetooth feature activated
	GPS activated
	Call in progress
	Missed call
	Synced with the web
	Connected to computer
	No SIM or USIM card
	New text or multimedia message
	Alarm activated
	Mute mode activated
	Vibration mode activated
	Flight mode activated
	Error occurred or caution required
	Battery power level

Notifications panel

Using the notifications panel

When you receive new notifications, such as messages or missed calls, indicator icons appear on the status bar. To see more information about the icons, open the notifications panel and view the details.

To open the notifications panel, drag the status bar downwards. To close the notifications panel, drag the bar from the bottom of the screen upwards.



You can use the following functions on the notifications panel.

Activate or deactivate options.
Tap and hold a button to view more detailed settings.



Launch **Settings**.

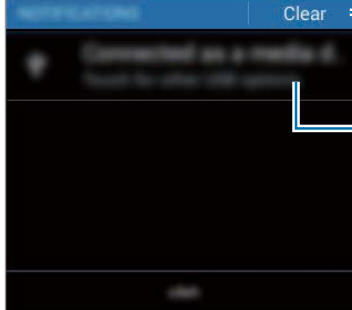
Adjust the brightness.



Clear all notifications.

Clear

Tap a notification and perform various actions.



Using the quick setting buttons

You can activate or deactivate some features on the notifications panel. Tap the following options to activate or deactivate them. You can view more detailed settings if you tap and hold a button.

- **Wi-Fi:** Refer to [Wi-Fi](#) for more information.
- **Location:** Refer to [Location](#) for more information.
- **Sound / Vibrate / Mute:** Select a sound mode.
- **Screen rotation:** Allow or prevent the interface from rotating when you rotate the device.




Some apps do not allow screen rotation.





- **Bluetooth:** Refer to [Bluetooth](#) for more information.
- **Mobile data:** Refer to [Data usage](#) or [Mobile networks](#) for more information.
- **Mobile hotspot:** Refer to [Tethering and Mobile hotspot](#) for more information.
- **NFC:** Refer to [NFC](#) for more information.
- **Sync:** When you activate this feature, the device automatically sync apps, such as calendar or email.
- **Flight mode:** Refer to [Flight mode](#) for more information.

Opening apps

On the Home screen or the Apps screen, select an app icon to open it.

To open the list of recently-used apps, tap  and select an app icon to open.

Closing an app

Tap  → , and then tap **End** next to an app to close it. To close all running apps, tap **End all**. Alternatively, tap  → .

Installing or uninstalling apps

Samsung Apps

Use this app to purchase and download apps.

Tap **Samsung Apps** on the Apps screen.



This app may not be available depending on the region or service provider.

Installing apps

Browse apps by category or tap **Q** to search for a keyword.

Select an app to view information about it. To download free apps, tap **Free**. To purchase and download apps where charges apply, tap the button that shows the app's price.



To change the auto update settings, tap **⋮** → **Settings** → **Auto update apps**, and then select an option.

Play Store

Use this app to purchase and download apps.

Tap **Play Store** on the Apps screen.

Installing apps

Browse apps by category or tap **Q** to search for a keyword.



Select an app to view information about it. To download free apps, tap **INSTALL**. To purchase and download apps where charges apply, tap the price and follow the on-screen instructions.





To change the auto update settings, tap **⋮** → **Settings** → **Auto-update apps**, and then select an option.


Managing apps

Uninstalling or disabling apps

To disable default apps, open the Apps screen and tap  → **Uninstall/disable apps**.  appears on the apps that you can disable. Select an app and tap **OK**.

To uninstall downloaded apps, open the Apps screen and tap  → **Downloaded apps** →  → **Uninstall**. Alternatively, on the Apps screen, tap **Settings** → **Application manager**, select an app, and then tap **Uninstall**.

Enabling apps

On the Apps screen, tap  → **Show disabled apps**, select apps, and then tap **Done**. Alternatively, on the Apps screen, tap **Settings** → **Application manager**, scroll to **DISABLED**, select an app, and then tap **Enable**.



- Hiding apps: Hide apps in the Apps screen only. You can continue to use hidden apps.
- Disabling apps: Disable selected default apps that cannot be uninstalled from the device. You cannot use disabled apps.
- Uninstalling apps: Uninstall downloaded apps.

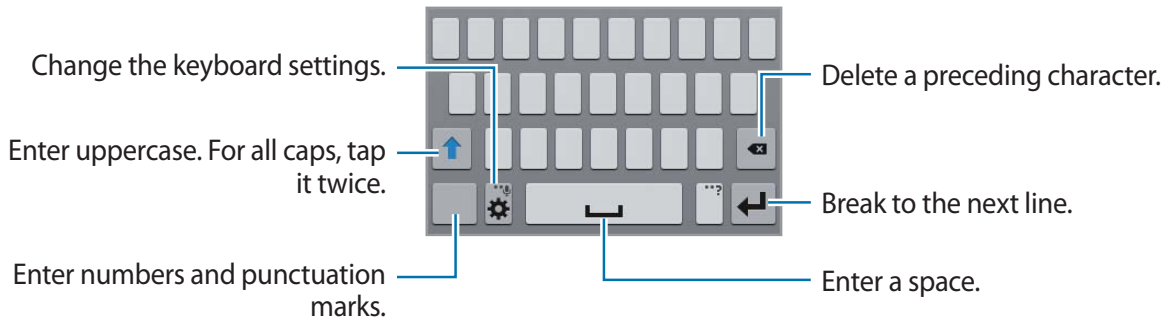
Entering text

Keyboard layout


A keyboard appears automatically when you enter text to send messages, create memos, and more.



Text entry is not supported in some languages. To enter text, you must change the input language to one of the supported languages.



Changing the input language

Tap  → **Select input languages**, and then select the languages to use. If you select two or more languages, you can switch between the input languages by sliding the space key left or right.



Changing the keyboard layout

Tap , select a language under **INPUT LANGUAGES**, and then select a keyboard layout to use.

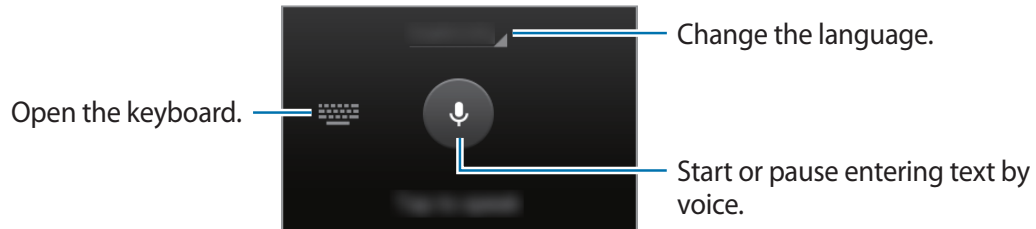




On **3x4 keyboard**, a key has three or four characters. To enter a character, tap the corresponding key repeatedly until the desired character appears.

Using additional keyboard functions





Tap and hold  to use various functions. Other icons may appear instead of  depending on the last function that was used.

-  : Enter text by voice.



-  : Add an item from the clipboard.
-  : Change the keyboard settings.

Copying and pasting

- 1 Tap and hold over text.
- 2 Drag  or  to select the desired text, or tap **Select all** to select all text.
- 3 Tap **Copy** or **Cut**. The selected text is copied to the clipboard.
- 4 Place the cursor where the text is to be inserted and tap  → **Paste**. To paste text that you have previously copied, tap  → **Clipboard** and select the text.

Screen capture

Capture a screenshot while using the device.

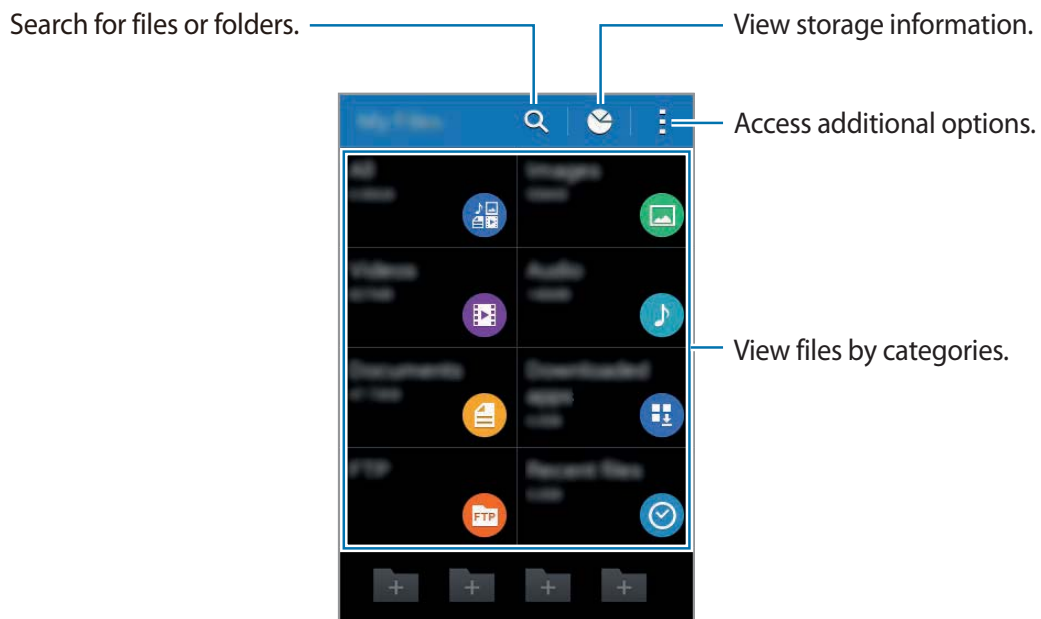
Press and hold the Home button and the Power button simultaneously. The image is saved in the **Gallery** → **Albums** → **Screenshots** folder. After capturing a screenshot, you can edit the image and share it with others.

My Files

About My Files



Use this app to access various files stored in the device or in other locations, such as cloud storage services.


Tap **My Files** on the Apps screen.



Viewing files



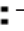




Tap **My Files** on the Apps screen.

Select a folder to open it. To go up a level in the directory, tap . To return to the My Files main screen, tap .

Select a folder, tap , and then use the following options:

- **Select item:** Select files or folders to apply options.
- **Create folder:** Create a folder.
- **View as:** Change the view mode.
- **Sort by:** Sort files or folders.
- **Add shortcut:** Add a shortcut to a folder on the My Files main screen or to the Home screen.
- **Settings:** Change the file manager settings.

Tap and hold a file or folder, and then use the following options:

- : Share files with others.
- : Delete files or folders.
-  → **Move:** Move files or folders to another folder.
-  → **Copy:** Copy files or folders to another folder.
-  → **Rename:** Rename a file or folder.
-  → **Zip:** Compress files or folders to create a zip file.
-  → **Details:** View file or folder details.

Viewing help information

To view help information for an app while you are using the app, tap  → **Help**.



Some apps may not include help information.

Network connectivity

Mobile data

Connect the device to a mobile network to use the Internet or share media files with other devices. Refer to [Data usage](#) for additional options.

On the Apps screen, tap **Settings** → **Data usage**, and then tick **Mobile data**.

Wi-Fi

Connect the device to a Wi-Fi network to use the Internet or share media files with other devices. Refer to [Wi-Fi](#) for additional options.



Turn off Wi-Fi to save the battery when not in use.

- 1 On the Apps screen, tap **Settings** → **Wi-Fi**, and then tap the **Wi-Fi** switch to activate it.
- 2 Select a network from the Wi-Fi networks list. Networks that require a password appear with a lock icon.
- 3 Tap **Connect**.



Once the device connects to a Wi-Fi network, the device will reconnect to that network each time it is available without requiring a password.

To prevent the device connecting to the network automatically, select it from the list of networks and tap **Forget**.

Adding Wi-Fi networks

If the desired network does not appear in the Wi-Fi networks list, tap **Add Wi-Fi network** at the bottom of the list. Enter the network name in **Network SSID**, select the security type and enter the password if it is not an open network, and then tap **Connect**.

Forgetting Wi-Fi networks

Any network that has ever been used, including the current network, can be forgotten so the device will not automatically connect to it. Select the network in the Wi-Fi networks list and tap **Forget**.

Using Smart network switch

Use this feature to maintain a stable network connection when you browse webpages, download content, and more.

On the Apps screen, tap **Settings** → **Wi-Fi**, and then tick **Smart network switch**. The device automatically switches from a Wi-Fi network to a mobile network when the current Wi-Fi network is weak or unstable. When the Wi-Fi network signal becomes strong, the device switches from the mobile network back to the Wi-Fi network.

Tethering and Mobile hotspot

About tethering and mobile hotspots



Use this feature to share the device's mobile data connection with computers and other devices if an Internet connection is unavailable. Connections can be made via Wi-Fi, USB, or Bluetooth.



You may incur additional charges when using this feature.


Using the mobile hotspot

Use your device as a mobile hotspot to share your device's mobile data connection with other devices.

- 1 On the Apps screen, tap **Settings** → **Tethering and Mobile hotspot** → **Mobile hotspot**.
- 2 Tap the **Mobile hotspot** switch to activate it.
 -  appears on the status bar. Other devices can find your device in the Wi-Fi networks list.
 - To set a password for the mobile hotspot, tap  → **Configure** and select the level of security. Then, enter a password and tap **Save**.
- 3 On the other device's screen, search for and select your device from the Wi-Fi networks list.
- 4 On the connected device, use the device's mobile data connection to access the Internet.



Using USB tethering

Share the device's mobile data connection with other devices via a USB cable.

- 1 On the Apps screen, tap **Settings** → **Tethering and Mobile hotspot**.
- 2 Connect your device to the computer via the USB cable.
- 3 Tick **USB tethering**.
 appears on the status bar when the two devices are connected.
- 4 On the computer, use your device's mobile data connection.

Using Bluetooth tethering

Share the device's mobile data connection with other devices via Bluetooth. Ensure that the computer that you connect to supports the Bluetooth feature.


- 1 Pair your device with the other device via Bluetooth. Refer to [Pairing with other Bluetooth devices](#) for more information.
- 2 On the Apps screen of your device, tap **Settings** → **Tethering and Mobile hotspot**.
- 3 Tick **Bluetooth tethering**.
- 4 On the connected device, open the Bluetooth settings screen, tap  → **Internet access**.
 appears on the status bar when the two devices are connected.
- 5 On the connected device, use the device's mobile data connection to access the Internet.

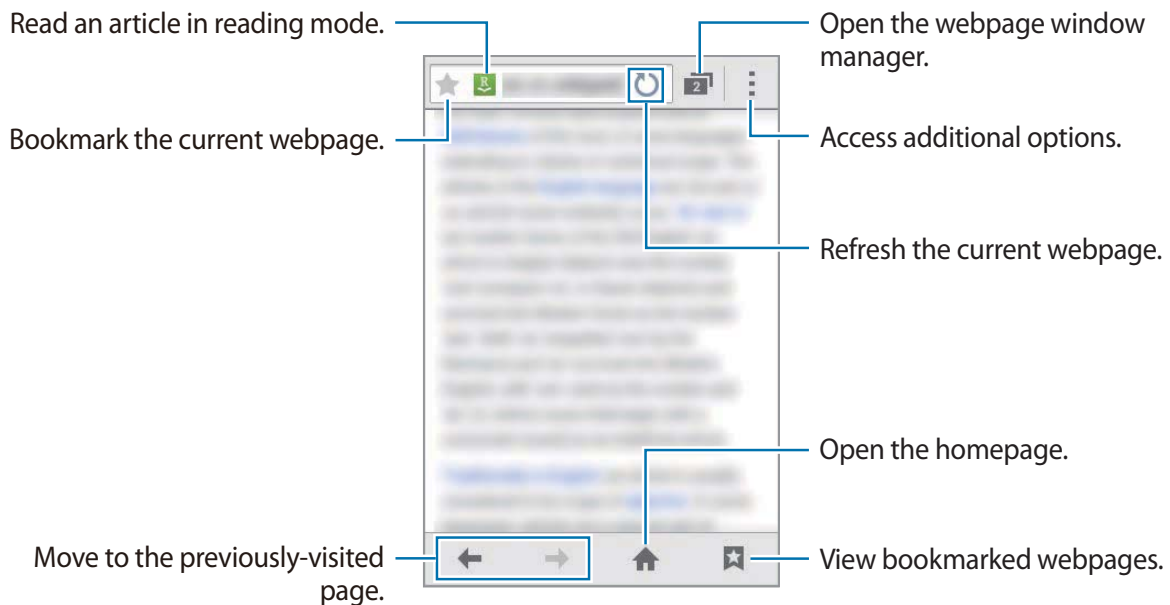


The connection methods may vary depending on the connected devices.

Internet

Browsing webpages

- 1 Tap **Internet** on the Apps screen.
 - 2 Tap the address field. To change the search engine, tap the search engine icon next to the web address field.
 - 3 Enter the web address or a keyword, and then tap **Go**. To search the web by voice, tap .
- To view the toolbars, drag your finger downwards slightly on the screen.



Setting the homepage

Tap **Internet** on the Apps screen.

Tap  → **Settings** → **General** → **Set homepage**, and then select one of the following:

- **Current page:** Set the current webpage as your homepage.
- **Blank page:** Set a blank page as your homepage.
- **Default page:** Set the device's default webpage as your homepage.
- **Other:** Set a preset webpage as your homepage.

While viewing a webpage, tap  to open the homepage.

Managing the webpage history

Tap **Internet** on the Apps screen.

Tap  → **History** to open a webpage from the list of recently-visited webpages.

To clear the history, tap  → **Clear history**.

Personalising

Managing the Home and Apps screens

Managing the Home screen

Adding items

Tap and hold an app or a folder from the Apps screen, and then drag it to the Home screen.

To add widgets, open the Home screen, tap and hold an empty area, tap **Widgets**, tap and hold a widget, and then drag it to the Home screen.

Moving and removing an item

Tap and hold an item on the Home screen, and then drag it to a new location.

To move the item to another panel, drag it to the side of the screen.

You can also move frequently-used apps to the shortcuts area at the bottom of the Home screen.

To remove an item, tap and hold the item. Then, drag it to **Remove** that appears at the top of the screen.

Creating a folder

- 1 On the Home screen, tap and hold an app, and then drag it to **Create folder** that appears at the top of the screen.
- 2 Enter a folder name.
- 3 Tap **+**, select the apps to move to the folder, and then tap **Done**.

Managing folders

To rename a folder, select a folder, and then tap the existing folder name. Enter a new name for the folder and tap **Done**.

To change the colour of a folder, select a folder, tap , and then select a colour.

To move more apps to a folder, tap and hold an app, and then drag it to the folder.

To move an app from a folder, select a folder, tap and hold the app, and then drag it to a new location.

Managing panels

On the Home screen, tap and hold an empty area to add, move, or remove a panel.

To add a panel, scroll left to the last panel, and then tap .

To move a panel, tap and hold a panel preview, and then drag it to a new location.

To remove a panel, tap and hold a panel preview, and then drag it to **Remove** at the top of the screen.

To set a panel as the main Home screen, tap .

Managing the Apps screen

Changing the sorting method

On the Apps screen, tap  → **View as** and select a sorting method.


Hiding apps

Hide apps that you do not want to see on the Apps screen.

On the Apps screen, tap  → **Hide apps**, select apps, and then tap **Done**.

To display hidden apps, tap  → **Show hidden apps**, select apps, and then tap **Done**.

Moving items

On the Apps screen, tap  → **Edit**. Tap and hold an item and drag it to a new location.

To move the item to another panel, drag it to the side of the screen.

To move an item to a new panel, drag it to **Create page** that appears at the top of the screen.



You can move folders only in the folder panel.

Setting wallpaper and ringtones

Setting wallpaper

Set an image or photo stored in the device as wallpaper for the Home screen or the locked screen.

- 1 On the Home screen, tap and hold an empty area, and then tap **Wallpapers**. Alternatively, on the Apps screen, tap **Settings** → **Display** → **Wallpaper**.
- 2 Select a screen to change or apply wallpaper to.
- 3 Scroll left or right and select from images displayed at the bottom of the screen.
- 4 Tap **Set wallpaper** or **Done**.

Changing ringtones

Change ringtones for incoming calls and notifications.

On the Apps screen, tap **Settings** → **Sound**.

To set a ringtone for incoming calls, tap **Ringtones** → **Ringtones**, select a ringtone, and then tap **OK**. To use a song stored in the device or in your account as a ringtone, tap **Add**.

To set a ringtone for notifications, tap **Ringtones** → **Notifications**, select a ringtone, and then tap **OK**.

Changing the screen lock method

You can change the way that you lock the screen to prevent others from accessing your personal information.

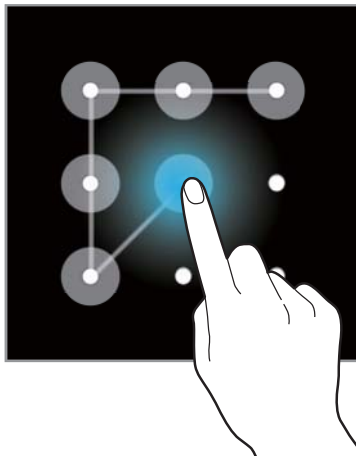
On the Apps screen, tap **Settings** → **Lock screen** → **Screen lock**, and then select a screen lock method. The device requires an unlock code whenever unlocking it.



If the unlock code is forgotten, take the device to a Samsung Service Centre to reset it.

Pattern

Draw a pattern by connecting four dots or more, and then draw the pattern again to verify it. Set a backup PIN to unlock the screen when you forget the pattern.



PIN

A PIN consists of numbers only. Enter at least four numbers, and then enter the password again to verify it.

Password

A password consists of characters and numbers. Enter at least four characters including numbers and symbols, and then enter the password again to verify it.

Transferring data from your previous device

Using backup accounts

You can transfer backup data from your previous device to your new device using your Google or Samsung account. Refer to [Backing up and restoring data](#) for more information.

Using Samsung Kies

Import a backup of your data from your computer via Samsung Kies to restore data on your device. You can also back up data to the computer via Samsung Kies. Refer to [Connecting with Samsung Kies](#) for more information.

Setting up accounts

Adding accounts

Some apps used on your device require a registered account. Create accounts to have the best experience with your device.

On the Apps screen, tap **Settings** → **Add account** and select an account service. Then, follow the on-screen instructions to complete the account setup.

To sync content with your accounts, select an account and tick items to sync.


Removing accounts

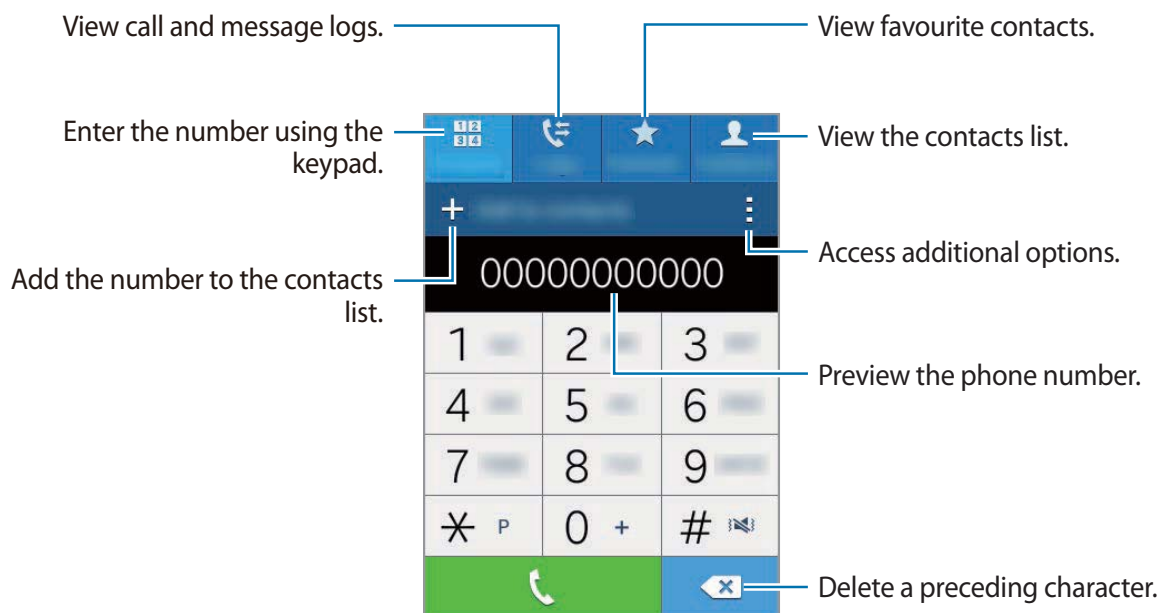
On the Apps screen, tap **Settings**, select an account name under **ACCOUNTS**, select the account to remove, and then tap **Remove account**.

Phone

Making calls

Tap **Phone** on the Apps screen.

Tap **Keypad**, enter a phone number, and then tap  to make a voice call.



You can also make calls to phone numbers listed in **Logs**, **Favourites**, and **Contacts**.

Making calls from call logs or contacts list

Tap **Logs** or **Contacts**, select a contact or a phone number, and then tap .

Making calls from the favourites list

You can easily call contacts that you communicate with frequently by adding them to the favourite contacts list.

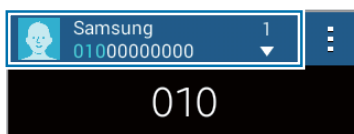
To add contacts to the favourites list, tap **Contacts**, select a contact, and then tap ★.

To make a call to a favourite contact, tap **Favourites**, select a contact, and then tap 📞.

Number prediction

Tap **Keypad**.

When entering numbers on the keypad, automatic predictions appear. Select one of these to make a call.



Speed dial numbers

Tap **Keypad**.

For speed dial numbers, tap and hold the corresponding digit.

To assign a contact to a speed dial number, tap and hold an available speed dial number on the keypad, tap **OK**, and then select a contact. Alternatively, tap ⋮ → **Speed dial**, select a number, and then select a contact.

Making an international call

Tap **Keypad**.

Tap and hold **0** until the + sign appears. Enter the country code, area code, and phone number, and then tap 📞.

To block outgoing international calls, tap ⋮ → **Settings** → **Call** → **Additional settings** → **Call barring**. Then, tick **International calls**, enter password, and then tap **OK**.

Receiving calls

Answering a call


When a call comes in, drag  outside the large circle.

If the call waiting service is activated, another call can be answered. When the second call is answered, the first call is put on hold.


Rejecting a call

When a call comes in, drag  outside the large circle.

To send a message when rejecting an incoming call, drag the reject message bar upwards.

To create various rejection messages, open the Apps screen and tap **Phone** →  → **Settings** → **Call** → **Set up call reject messages** → **Create**.







Missed calls


If a call is missed,  appears on the status bar. Open the notifications panel to view the list of missed calls. Alternatively, on the Apps screen, tap **Phone** → **Logs** to view missed calls.

Options during calls

During a voice call

The following actions are available:

- **Add call:** Dial a second call.
- **Keypad:** Open the keypad.
- **End call:** End the current call.
- **Speaker:** Activate or deactivate the speakerphone. When using the speakerphone, speak into the microphone at the top of the device and keep the device away from your ears.
- **Mute:** Turn off the microphone so that the other party cannot hear you.
- **Bluetooth:** Switch to a Bluetooth headset if it is connected to the device.
-  → **Contacts:** Open the contacts list.
-  → **Memo:** Create a memo.
-  → **Messages:** Send a message.
-  → **Hold:** Hold a call. Tap **Unhold** to retrieve the held call.
-  → **Extra volume:** Increase the volume.
-  → **Call settings:** Change the call settings.

When you launch apps during a call, a pop-up window for the call screen () appears. You can continue your phone conversation while using apps.

To move the pop-up window, drag it to another location.

To delete the pop-up window, tap and hold it, and then tap **OK**.

To return to the call screen, tap the pop-up window.


Contacts

Adding contacts

Moving contacts from other devices

You can move contacts from other devices to your device. Refer to [Transferring data from your previous device](#) for more information.


Creating contacts manually

- 1 On the Apps screen, tap **Contacts** → **Contacts**.
- 2 Tap **+** and enter contact information.
 - : Add an image.
 - **+** / **-**: Add or delete a contact field.
- 3 Tap **Save**.

To add a phone number to the contacts list from the keypad, tap **Keypad**, enter the number, and then tap **Add to contacts**.

Managing contacts

Editing a contact

- 1 On the Apps screen, tap **Contacts** → **Contacts**.
- 2 Select a contact to edit and tap .
- 3 Edit the contact information or tap **Add another field** to add more contact information.
- 4 Tap **Save**.

Deleting a contact

Select a contact to delete and tap  → **Delete**.

Sharing a contact


Select a contact to share, tap  → **Share name card**, and then select a sharing method.

Managing groups

On the Apps screen, tap **Contacts** → **Contacts**.

Tap .

Creating a new group

Tap , enter a group name, and then tap **Save**.

Adding contacts to a group

Select a group, and then tap . Select contacts to add, and then tap **Done**.

Deleting a group

Tap , select user-added groups, and then tap **Done**.

Importing and exporting contacts

Import contacts from storage services to your device or export contacts from the device to storage services.

On the Apps screen, tap **Contacts** → **Contacts**.

Tap  → **Settings** → **Contacts** → **Import/export**, and then select an import or export option.





Searching for contacts

On the Apps screen, tap **Contacts** → **Contacts**.

Use one of the following search methods:


- Scroll up or down the contacts list.
- Tap the search field at the top of the contacts list and enter search criteria.

Once a contact is selected, take one of the following actions:

-  : Add to favourite contacts.
-  : Make a voice call.
-  : Compose a message.
-  : Compose an email.

Adding shortcuts for contacts to the Home screen

Add shortcuts to contacts that you frequently communicate with on the Home screen.

- 1 On the Apps screen, tap **Contacts** → **Contacts**.
- 2 Select a contact.
- 3 Tap  → **Add shortcut to home screen**.

Messages & email


Messages

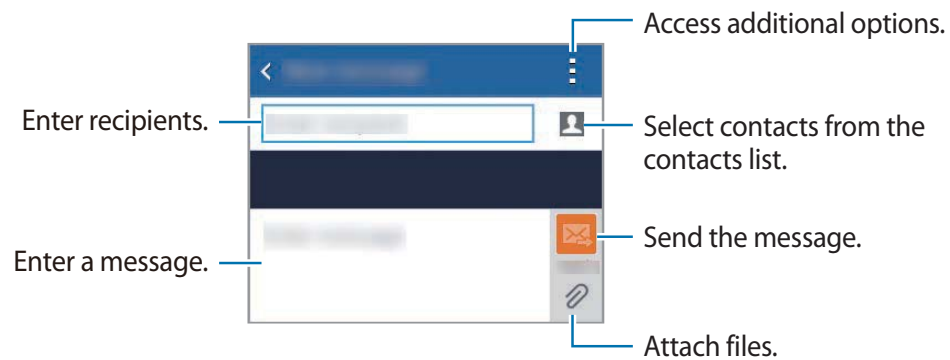
Sending messages

Send text messages (SMS) or multimedia messages (MMS).



You may incur additional charges for sending or receiving messages when you are roaming.

- 1 Tap **Messages** on the Apps screen.
- 2 Tap .
- 3 Add recipients and enter a message.



- 4 Tap  to send the message.

While composing a message, tap  to use one of the following options:

- **Insert smiley:** Enter emoticons.
- **Add subject:** Enter a subject.
- **Add slide:** Add message slides.
- **Schedule message:** Set a specified time and date for a message to be sent.
- **Discard:** Cancel composing the message.
- **Font size:** Change the font size of text in the text field.

Sending scheduled messages

While composing a message, tap  → **Schedule message**. Set a time and date and tap **Done**.



- If the device is turned off at the scheduled time, is not connected to the network, or the network is unstable, the message will not be sent.
- This feature is based on the time and date set on the device. Messages may be sent at an incorrect time if you move across time zones or the network does not update the information.

Viewing incoming messages

Incoming messages are grouped into message threads by contact. Select a contact to view the person's messages.



You may incur additional charges for sending or receiving messages when you are roaming.

While viewing a message, tap  to use one of the following options:

- **Add recipients:** Add recipients to send the message to.
- **Insert smiley:** Enter emoticons.
- **Add subject:** Enter a subject.
- **Add slide:** Add message slides.

- **Schedule message:** Set a specified time and date from a message to be sent.
- **Add to spam numbers / Remove from spam numbers:** Identify a phone number as spam or remove a phone number from the spam list.
- **Discard:** Cancel composing the message.
- **Font size:** Change the font size of text in the text field.

Managing messages

While viewing the list of messages, tap  and use the following options:

- **Select:** Select messages to apply options.
- **Delete:** Delete all or selected messages.
- **Spam filter:** View spam messages.
- **Font size:** Change the font size of text in the text field.
- **Settings:** Change message settings.

Email

Setting up email accounts

Tap **Email** on the Apps screen.

Set up an email account when opening **Email** for the first time.

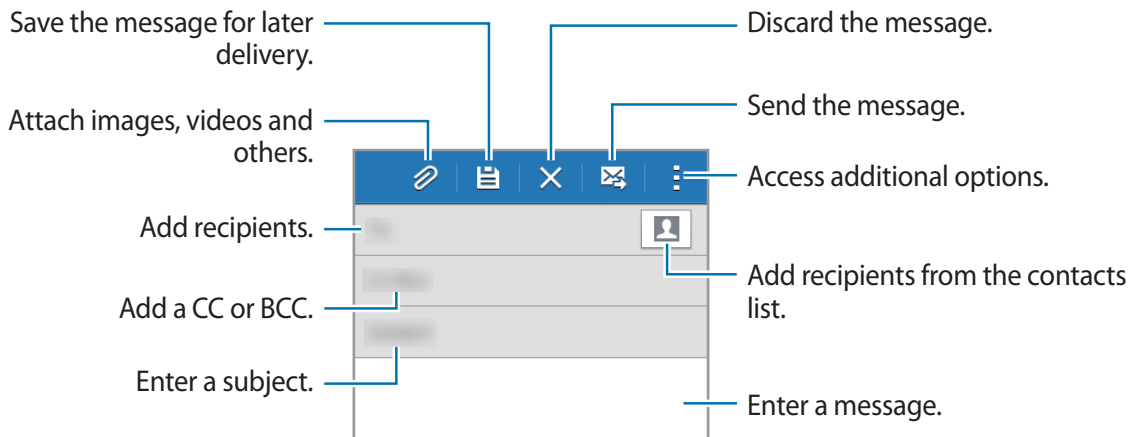
Enter the email address and password. Tap **Next** for a private email account or tap **Manual setup** for a company email account. After that, follow the on-screen instructions to complete the setup.

To set up another email account, tap  → **Settings** → **Add account**.


Sending messages

Tap **Email** on the Apps screen.

Tap  at the bottom of the screen to compose a message.



Accessing additional options

While composing a message, tap  and access additional options.

- **Send email to myself:** Send the message to myself.
- **Scheduled email:** Send the message at a scheduled time.





- If the device is turned off at the scheduled time, is not connected to the network, or the network is unstable, the message will not be sent.
- This feature is based on the time and date set on the device. Messages may be sent at an incorrect time if you move across time zones or the network does not update the information.

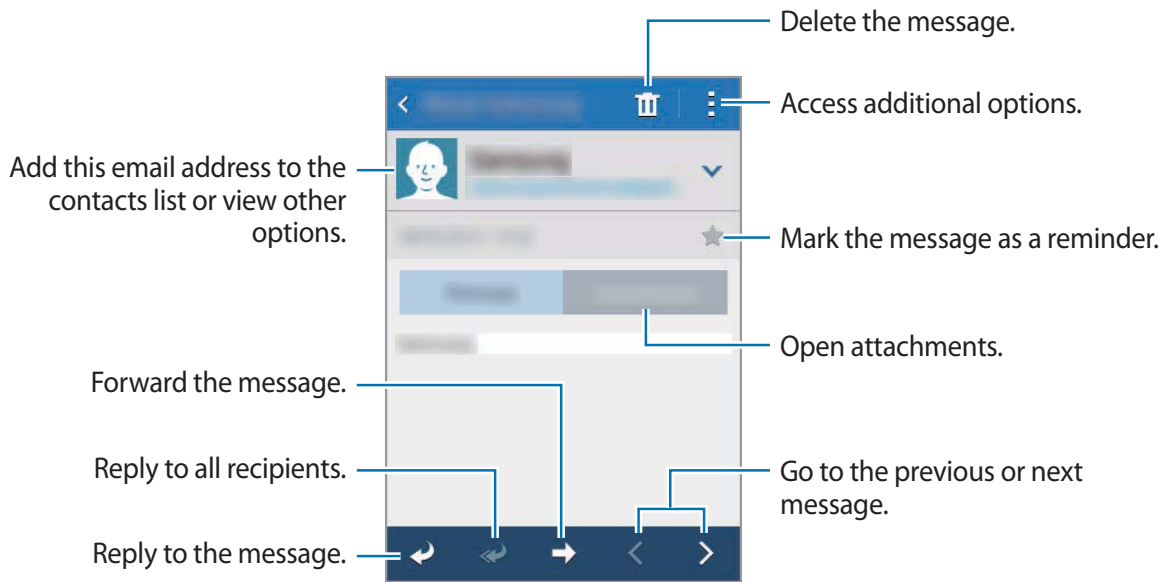
- **Priority:** Select a message's priority level.

Reading messages

Tap **Email** on the Apps screen.

Tap , select an email account to use, and new messages are retrieved. To manually retrieve new messages, tap .



Tap a message to read.

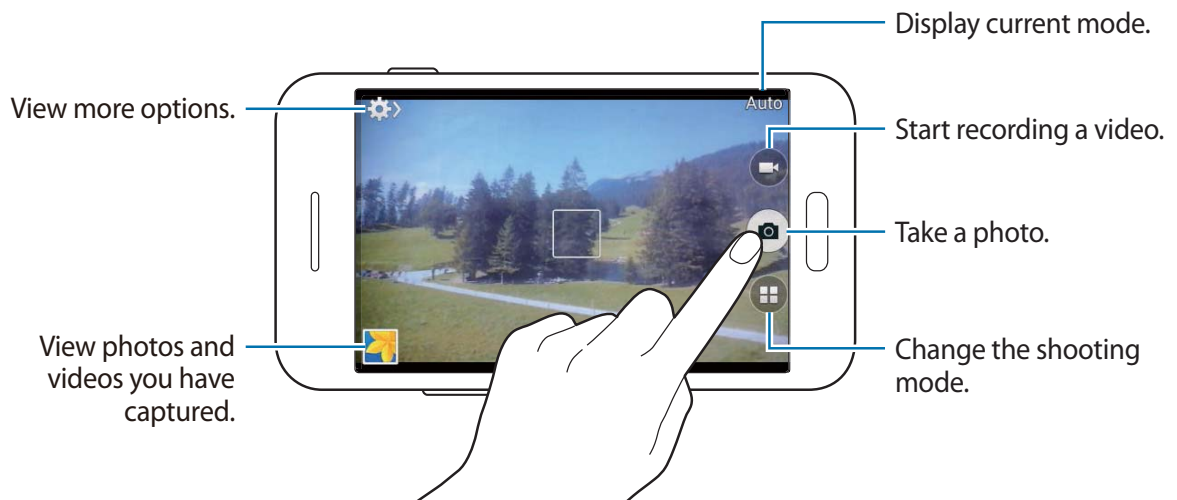


Camera

Basic shooting

Taking photos or recording videos



- 1 Tap **Camera** on the Apps screen.
- 2 Tap  to take a photo or tap  to record a video.
Spread two fingers apart on the screen to zoom in, and pinch to zoom out.



- The camera automatically shuts off when unused.
- Make sure that the lens is clean. Otherwise, the device may not work properly in some modes that require high resolutions.

Launching Camera on the locked screen

To quickly take photos of special moments, launch **Camera** on the locked screen.

On the locked screen, drag  outside the large circle. If  is not shown, open the Apps screen, tap **Settings** → **Lock screen**, and then tick **Camera shortcut**.



This feature may not be available depending on the region or service provider.

Camera etiquette

- Do not take photos or record videos of other people without their permission.
- Do not take photos or record videos where legally prohibited.
- Do not take photos or record videos in places where you may violate other people's privacy.

Shooting modes

Auto

Use this mode to allow the camera to evaluate the surroundings and determine the ideal mode for the photo.

On the Apps screen, tap **Camera** →  → **Auto**.

Sound & shot

Use this mode to take a photo with sound. The device identifies the photos with  in **Gallery**.

On the Apps screen, tap **Camera** →  → **Sound & shot**.

Panorama

Use this mode to take a photo composed of many photos strung together.

On the Apps screen, tap **Camera** →  → **Panorama**.



To get the best shot, follow these tips:



- Move the camera slowly in one direction.
- Keep the image within the frame on the camera's viewfinder.
- Avoid taking photos of indistinct backgrounds, such as an empty sky or a plain wall.

Night

Use this mode to take a photo in low-light conditions, without using the flash.

On the Apps screen, tap **Camera** →  → **Night**.

Camera settings

On the Apps screen, tap **Camera** →  → . Not all of the following options are available in both still camera and video camera modes.

- **Photo size / Video size:** Select a resolution. Use higher resolution for higher quality. But it takes up more memory.
- **Metering modes:** Select a metering method. This determines how light values are calculated. **Centre-weighted** measures background light in the centre of the scene. **Spot** measures the light value at a specific location. **Matrix** averages the entire scene.
- **Location tag:** Attach a GPS location tag to the photo.



- To improve GPS signals, avoid shooting in locations where the signal may be obstructed, such as between buildings or in low-lying areas, or in poor weather conditions.
- Your location may appear on your photos when you upload them to the Internet. To avoid this, deactivate the GPS tag setting.

- **Volume key:** Set the device to use the Volume button to control the shutter or zoom function.
- **Timer:** Use this for delayed-time shots.
- **White balance:** Select an appropriate white balance, so images have a true-to-life colour range. The settings are designed for specific lighting situations. These settings are similar to the heat range for white-balance exposure in professional cameras.
- **Brightness:** Change the brightness.
- **Guidelines:** Display viewfinder guides to help composition when selecting subjects.
- **Contextual filename:** Set the camera to add contextual tags, such as location information, to filenames.
- **Storage:** Select the memory location for storage.
- **Edit quick settings:** Reorganise shortcuts to frequently-used options.
- **Reset:** Reset the camera settings.




The available options vary depending on the mode used.

Gallery

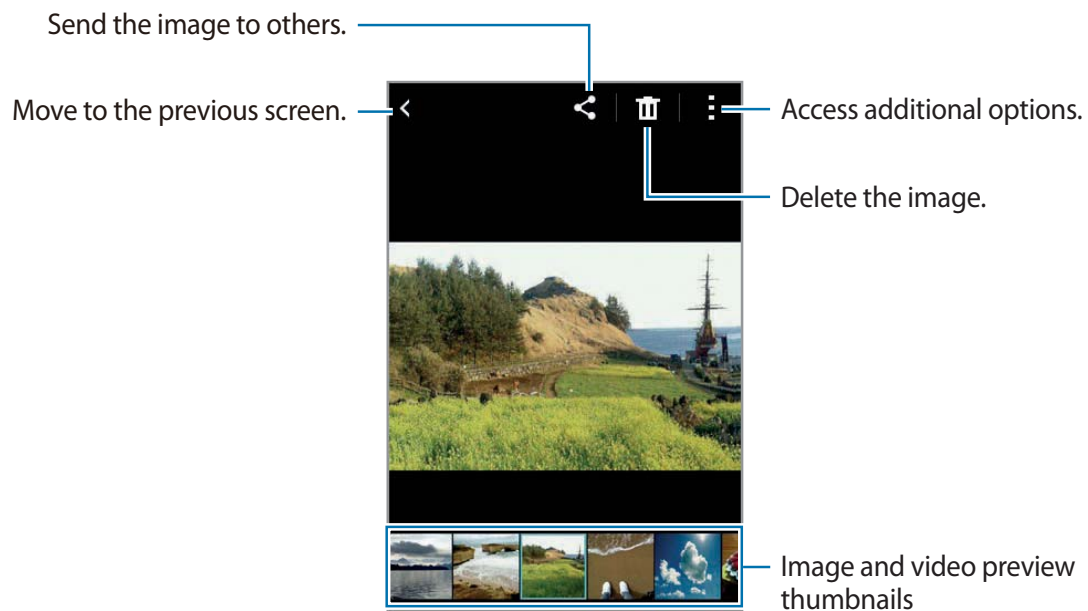
Viewing photos or videos

Viewing content on the device


On the Apps screen, tap **Gallery** and select an image or a video.

Video files show the  icon on the preview thumbnail.

To hide or show the menu bar and the preview thumbnails, tap the screen.




Accessing additional options

On the Apps screen, tap **Gallery** and select an image or a video. Tap  and use the following options.

- **Slideshow:** Start a slideshow with the images in the current folder.
- **Copy to clipboard:** Copy the file to the clipboard.
- **Print:** Print the image by connecting the device to a printer. Refer to [Mobile printing](#) for more information.
- **Rename:** Rename the file.
- **Rotate left:** Rotate anticlockwise.
- **Rotate right:** Rotate clockwise.
- **Crop:** Crop the image.
- **Set as:** Set the image as wallpaper or a contact image.
- **Details:** View image or video details.
- **Settings:** Change the Gallery settings.



The available options may differ depending on the selected file.

To select multiple files from the file list, tap and hold a file, and then tap the other files. When the files are selected, you can share or delete them at the same time or tap  to access additional options.

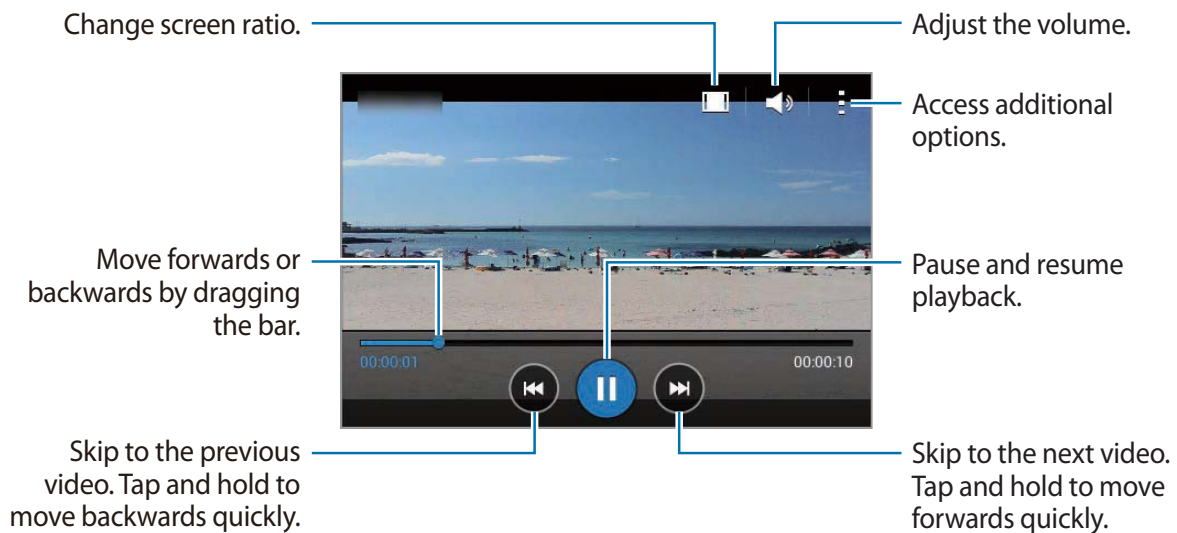
Multimedia

Video

Playing videos

Tap **Video** on the Apps screen.

Select a video to play.



Sharing or deleting videos

Tap **Video** on the Apps screen.

Tap and hold a video, tap **⋮** → **Share via**, and then select a sharing method.

Tap **⋮** → **Delete**, select videos, and then tap **Done**.

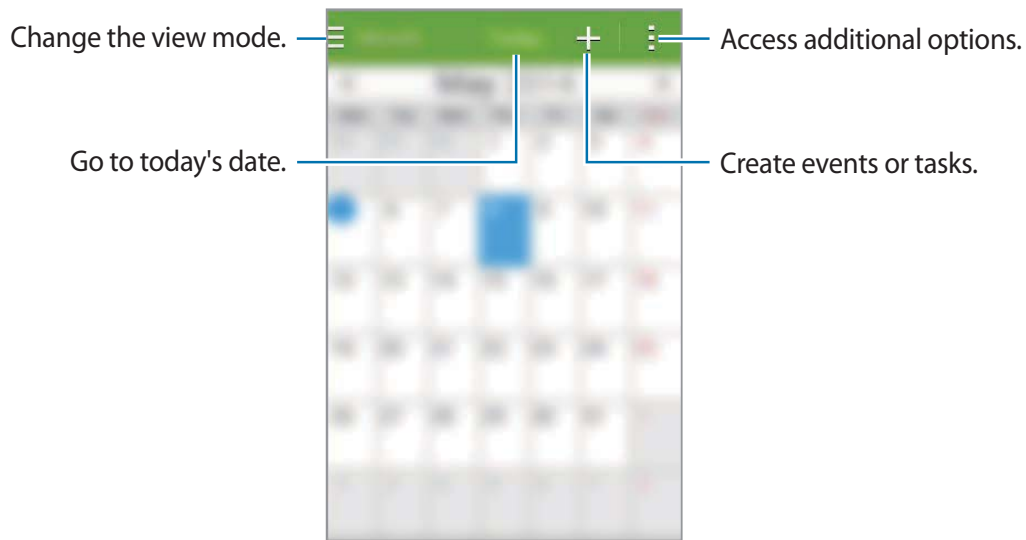
Useful apps and features


S Planner

Starting S Planner

Use this app to manage events and tasks.

Tap **S Planner** on the Apps screen.

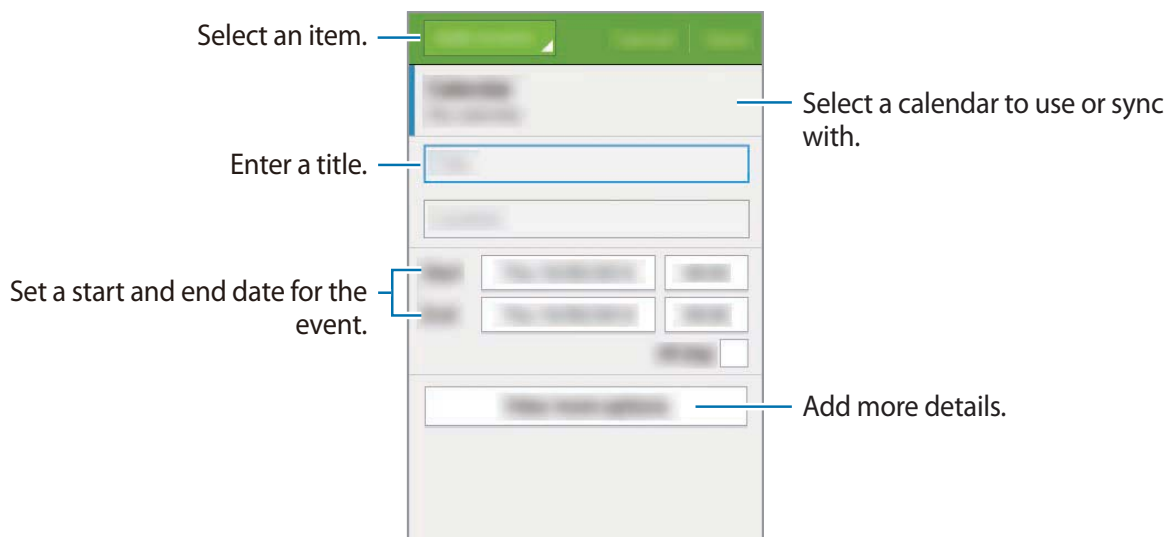


Tap  and use the following:

- **Go to:** Move to a specific date.
- **Delete:** Delete events or tasks.
- **Search:** Search for events or tasks.
- **Sync:** Sync events and tasks with your accounts.
- **Calendars:** Select the calendars to display.
- **Settings:** Change settings for S Planner.

Creating events or tasks


- 1 Tap **S Planner** on the Apps screen.
- 2 Tap **+**. Alternatively, select a date with no events or tasks in it and tap the date again. If the date already has saved events or tasks in it, tap the date and tap **+**.
- 3 Select either event or task and enter details.
 - **Add event:** Set a start and end date for an event. You can set an optional repeat setting.
 - **Add task:** Add a task to do on a specific date. You can set an optional priority setting.




- 4 Tap **Save** to save the event or task.

Syncing events and tasks with your accounts

Tap **S Planner** on the Apps screen.

To sync events and tasks with your accounts, tap  → **Sync**.

To add accounts to sync with, tap  → **Calendars** → **Add account**. Then, select an account to sync with and sign in. When an account is added, a green circle is displayed next to the account name.

To change an account's syncing option, open the Apps screen, tap **Settings**, and then select an account service under **ACCOUNTS**.

Deleting events or tasks

Tap **S Planner** on the Apps screen.


To delete events or tasks, tap  → **Delete**, select the events or tasks, and then tap **Done** → **OK**.

To delete an event or task while viewing it, tap  → **Delete** → **OK**.

To mark tasks as completed, tap a date that has tasks in it and tick completed tasks.

Sharing events or tasks


Tap **S Planner** on the Apps screen.

To share an event or task while viewing it, tap  → **Share via**, and then select a sharing method.

Calculator

Use this app for simple or complex calculations.

Tap **Calculator** on the Apps screen.

Rotate the device to landscape orientation to display the scientific calculator. If **Screen rotation** is disabled, tap  → **Scientific calculator**.

ChatON

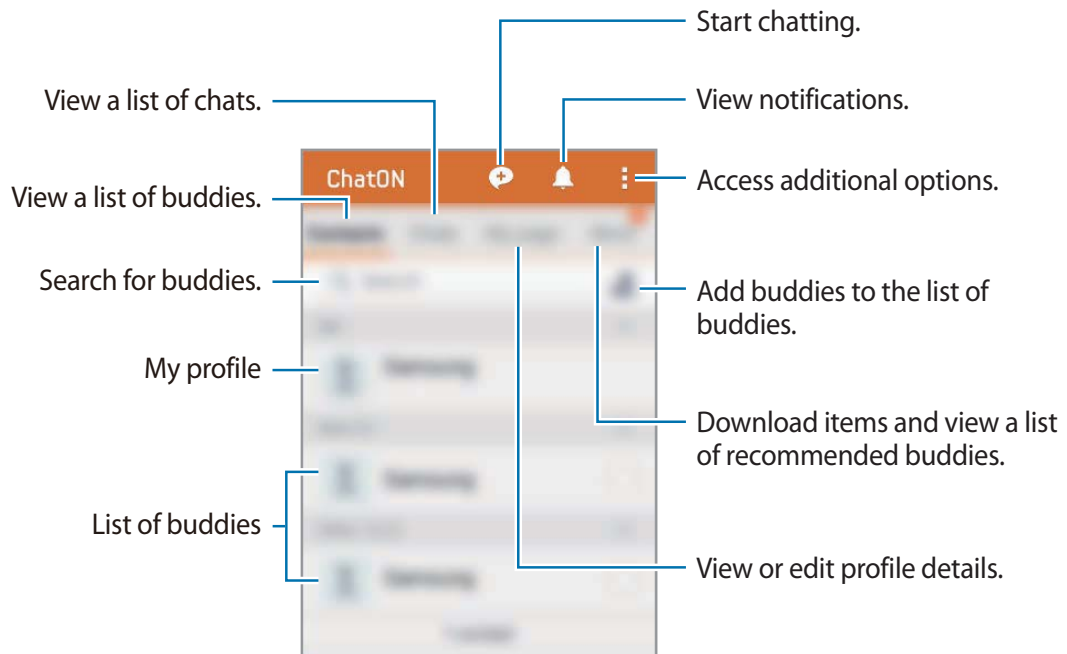
Use this app to chat and socialise with your friends individually or in groups. When you sign in to your Samsung account, you can view all your chat history sent from registered devices.

Tap **ChatON** on the Apps screen.



This app may not be available depending on the region or service provider.

Follow the on-screen instructions to complete the setup.




Tap , select buddies to start chatting with, and then tap **Done**.

Clock

Alarm



On the Apps screen, tap **Clock** → **Alarm**.

Setting alarms

Tap **+** in the alarms list, set an alarm time, select the days on which the alarm will repeat, set other various alarm options, and then tap **Save**. To activate or deactivate alarms, tap  next to the alarm in the alarms list.

- **Snooze:** Set an interval and the number of times for the alarm to repeat after the preset time.
- **Smart alarm:** Set a time and tone for the smart alarm. A smart alarm starts at a low volume a few minutes before a preset alarm is scheduled to sound. The volume of the smart alarm increases gradually until you turn it off or the preset alarm sounds.

Stopping alarms

Drag  outside the large circle to stop an alarm. If you have previously enabled the snooze option, drag  outside the large circle to repeat the alarm after a specified length of time.

Deleting alarms

Tap  → **Delete**, select alarms, and then tap **Done**.

World clock

On the Apps screen, tap **Clock** → **World clock**.

Creating clocks

Tap **+** and enter a city name or select a city from the cities list.

Deleting clocks

Tap **:** → **Delete**, select clocks, and then tap **Done**.

Stopwatch

On the Apps screen, tap **Clock** → **Stopwatch**.

Tap **Start** to time an event. Tap **Lap** to record lap times.

Tap **Stop** to stop timing. To clear lap times, tap **Reset**.

To set the device to dim the screen during laps, tap **:** → **Settings** → **Keep screen dimmed**.

Timer

On the Apps screen, tap **Clock** → **Timer**.

Set the duration, and then tap **Start**.

Drag **X** outside the large circle when the timer goes off.

To change the alarm ringtone settings, tap **:** → **Settings**.

Downloads

Use this app to see what files are downloaded through the apps.

Tap **Downloads** on the Apps screen.



This app may not be available depending on the region or service provider.

Select a file to open it with an appropriate app.

To sort the files by date, title, or size tap  → **Sort by**.

To clear the history, tap  → **Clear list**.

Games

Use this app to purchase and download games.



This app may not be available depending on the region or service provider.

- 1 Tap **Games** on the Apps screen.
- 2 Tap the download button on a game.
The installation file is saved in **Downloads**.
- 3 To install the game, open the Apps screen and tap **Downloads**.
- 4 Select the installation file and follow the on-screen instructions.




Memo

Use this app to create memos and organise them by category.

Tap **Memo** on the Apps screen.

Composing memos


Tap **+** on the memos list and enter a memo. While composing a memo, use the following options:

- : Create or set a category.
- : Insert images.
- : Make a voice recording to insert.

To save the memo, tap **Save**.


To edit a memo, tap a memo, and then tap the content of the memo.

Searching for memos

Tap  on the memos list and enter a keyword to search for memos that include the keyword.

Adding and managing categories


Create categories to sort and manage your memos.

On the memos list, tap  → **Manage categories**.

To add a new category, tap **+**, enter a category name, and then tap **OK**.

To delete a category, tap  next to the category.

To rename a category, tap and hold a category name, enter a new name for the category, and then tap **OK**.

To change the category order, tap  next to a category and drag it up or down to another position.

Accessing additional options

You can access additional options on the memos list and while viewing memos.

On the memos list, tap  and use the following options:

- **Select:** Select memos to apply options.
- **Delete:** Delete memos.
- **Account:** Sync memos with your Samsung account.

While viewing a memo, tap  and use the following options:

- **Delete:** Delete the memo.
- **Share Via:** Share the memo with others.
- **Print:** Print the memo by connecting the device to a printer. Refer to [Mobile printing](#) for more information.

Radio

Listening to the FM radio

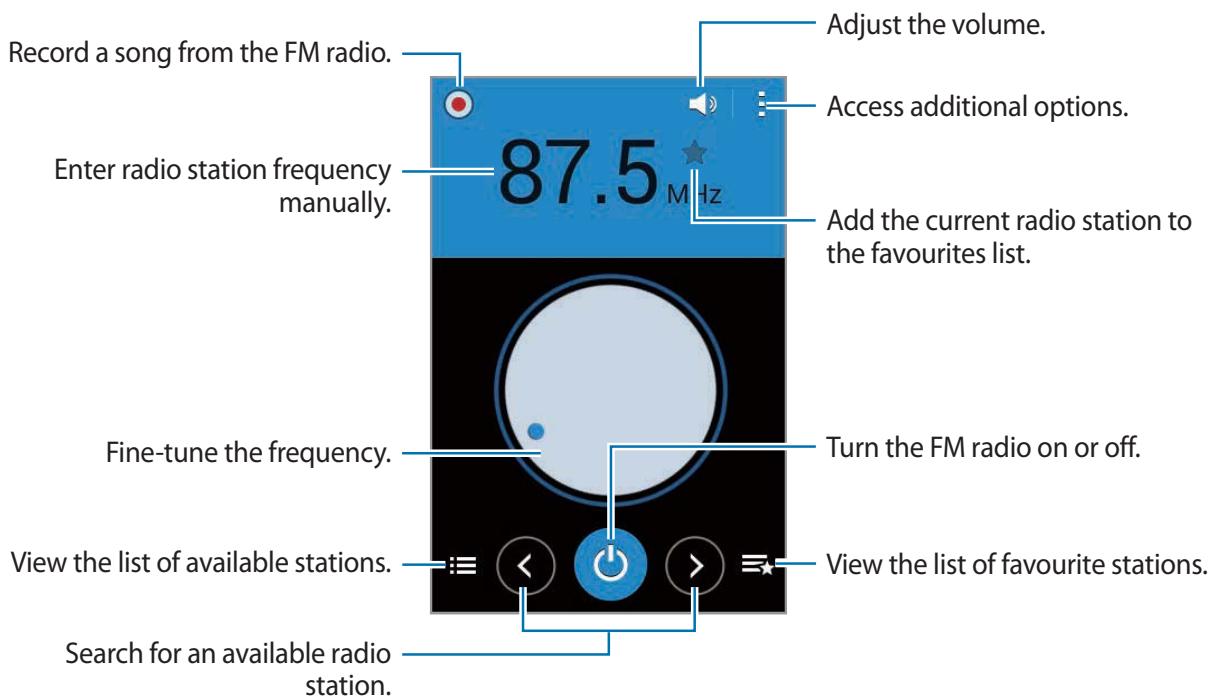
Tap **Radio** on the Apps screen.

Plug a headset into the device before launching the FM radio.



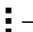
The FM radio scans and saves available stations automatically when running for the first time.


Tap  to turn on the FM radio. Select the radio station you want from the stations list and tap  to return to the FM radio screen.



Scanning radio stations

Tap **Radio** on the Apps screen.

Tap  → **Scan**, and then select a scan option. The FM radio scans and saves available stations automatically.

Select the radio station you want from the stations list and tap  to return to the FM radio screen.

Adding stations to the favourites list





Tap **Radio** on the Apps screen.

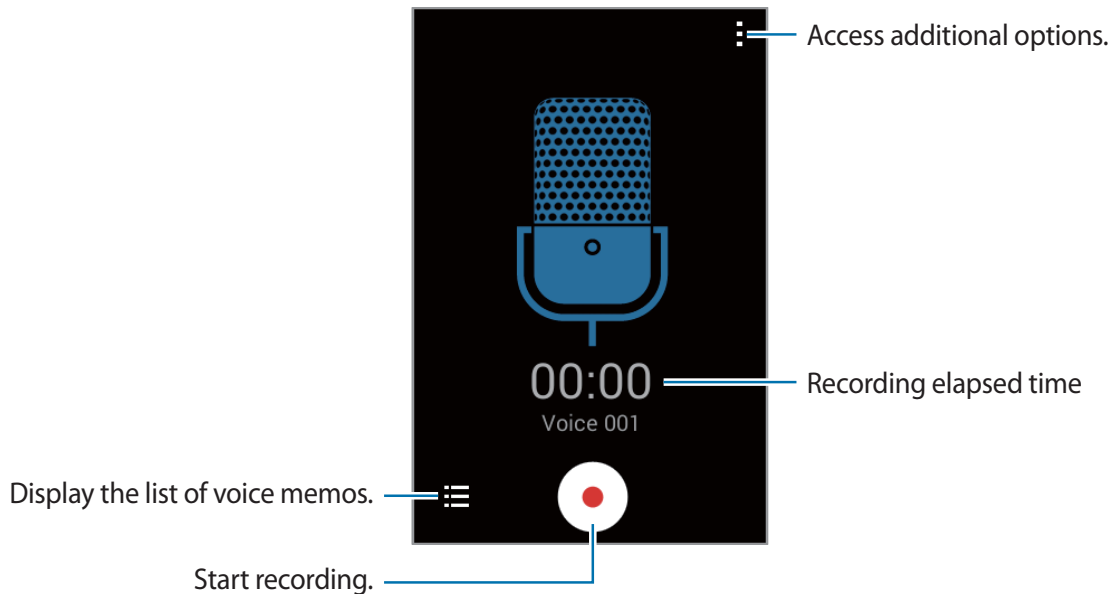
Scroll to a radio station, and then tap  to add the station to the favourites list.

Voice Recorder

Recording voice memos

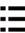
Tap **Voice Recorder** on the Apps screen.



Tap  to start recording. Speak into the microphone. Tap  to pause recording. To cancel recording, tap . Tap  to finish recording.



Playing voice memos

Tap **Voice Recorder** on the Apps screen.

Tap  and select a voice memo to play.

-  : Pause or resume playback.
-  : Skip to the previous or next voice memo.

Managing voice memos

On the Apps screen, tap **Voice Recorder** → ☰.

Tap ☰ and select one of the following:

- **Select:** Select voice memos to apply options.
- **Delete:** Select voice memos to delete.
- **Settings:** Change the voice recorder settings.

Renaming voice memos

Tap and hold the voice memo, tap ☰ → **Rename**, enter a new name for the voice memo, and then tap **OK**.

Google apps

Google provides entertainment, social network, and business apps. You may require a Google account to access some apps. Refer to [Setting up accounts](#) for more information.

To view more app information, open the each app's main screen and tap ☰ → **Help**.



Some apps may not be available or may be labelled differently depending on the region or service provider.

Chrome

Search for information and browse webpages.

Google Mail

Send or receive emails via the Google Mail service.

Google+

Share your news and follow updates that your family, friends, and others share. You can also back up your photos and videos, and more.

Maps

Find your location on the map, search for locations, and view location information for various places.

Play Music

Discover, listen to, and share music on your device.

Play Movies & TV

Watch videos stored on your device and download various content to watch from **Play Store**.

Play Books

Download various books from **Play Store** and read them.

Play Newsstand

Read news and magazines that interest you in one convenient location.

Play Games

Download games from **Play Store** and play them with others.

Drive

Store your content on the cloud, access it from anywhere, and share it with others.

YouTube

Watch or create videos and share them with others.

Photos

Manage photos, albums, and videos that you have saved on the device and uploaded to **Google+**.

Hangouts

Chat with your friends individually or in groups and use images, emoticons, and video calls while you are chatting.

Google

Search quickly for items on the Internet or your device.

Voice Search

Search quickly for items by saying a keyword or phrase.

Google Settings

Configure settings for some features provided by Google.

Connecting with other devices

Bluetooth

About Bluetooth

Bluetooth creates a direct wireless connection between two devices over short distances. Use Bluetooth to exchange data or media files with other devices.



- Samsung is not responsible for the loss, interception, or misuse of data sent or received via Bluetooth.
- Always ensure that you share and receive data with devices that are trusted and properly secured. If there are obstacles between the devices, the operating distance may be reduced.
- Some devices, especially those that are not tested or approved by the Bluetooth SIG, may be incompatible with your device.
- Do not use the Bluetooth feature for illegal purposes (for example, pirating copies of files or illegally tapping communications for commercial purposes).

Samsung is not responsible for the repercussion of illegal use of the Bluetooth feature.

Pairing with other Bluetooth devices

- 1 On the Apps screen, tap **Settings** → **Bluetooth**, tap the **Bluetooth** switch to activate it, and then tap **Scan**.

The detected devices are listed.

To set the device as visible to other devices, tap the device name.

- 2 Select a device to pair with.

If your device has paired with the device before, tap the device name without confirming the auto-generated passkey.

If the device you want to pair with is not in the list, request that the device turns on its visibility option.

- 3 Accept the Bluetooth authorisation request on both devices to confirm.

Sending and receiving data

Many apps support data transfer via Bluetooth. You can share data, such as contacts or media files, with other Bluetooth devices. The following actions are an example of sending an image to another device.

Sending an image

- 1 On the Apps screen, tap **Gallery**.

- 2 Select an image.

- 3 Tap  → **Bluetooth**, and then select a device to transfer the image to.


If the device you want to pair with is not in the list, request that the device turns on its visibility option. Or, set your device as visible to other devices.

- 4 Accept the Bluetooth authorisation request on the other device.

Receiving an image

When another device sends you an image, accept the Bluetooth authorisation request. The received image is saved in the **Gallery** → **Download** folder.

Unpairing Bluetooth devices


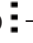
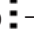
- 1 On the Apps screen, tap **Settings** → **Bluetooth**.
The device displays the paired devices in the list.
- 2 Tap  next to the device's name to unpair.
- 3 Tap **Unpair**.

Wi-Fi Direct

About Wi-Fi Direct

Wi-Fi Direct connects devices directly via a Wi-Fi network without requiring an access point.


Connecting to other devices

- 1 On the Apps screen, tap **Settings** → **Wi-Fi**, and then tap the **Wi-Fi** switch to activate it.
- 2 Tap  → **Wi-Fi Direct**.
The detected devices are listed.
- 3 Select a device to connect to.
To connect to multiple devices, tap  → **Multi-connect**.
To change the device name, tap  → **Rename device**.
- 4 Accept the Wi-Fi Direct authorisation request on the other device to confirm.

Sending and receiving data

You can share data, such as contacts or media files, with other devices. The following actions are an example of sending an image to another device.


Sending an image

- 1 On the Apps screen, tap **Gallery**.
- 2 Select an image.
- 3 Tap  → **Wi-Fi Direct**, and then select a device to transfer the image to.
- 4 Accept the Wi-Fi Direct authorisation request on the other device.

Receiving an image

When another device sends you an image, accept the Wi-Fi Direct authorisation request. The received image is saved in the **Gallery** → **Download** folder.

Ending the device connection

- 1 On the Apps screen, tap **Settings** → **Wi-Fi**.
- 2 Tap  → **Wi-Fi Direct**.
The device displays the connected devices in the list.
- 3 Tap **End connection** → **OK** to disconnect the devices.

NFC

About NFC

Your device allows you to read near field communication (NFC) tags that contain information about products. You can also use this feature to make payments and buy tickets for transportation or events after downloading the required apps.



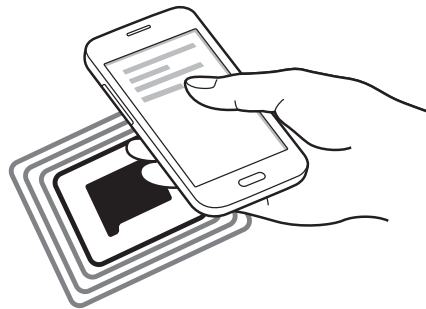
The battery contains a built-in NFC antenna. Handle the battery carefully to avoid damaging the NFC antenna.

Using the NFC feature

Use the NFC feature to send images or contacts to other devices, and read product information from NFC tags. If you insert a SIM or USIM card that has a payment feature, you can use the device to make payments conveniently.

On the Apps screen, tap **Settings** → **NFC**, and then tap the **NFC** switch to activate it.

Place the NFC antenna area on the back of your device near an NFC tag. The information from the tag appears.



Ensure that the device's screen is unlocked. Otherwise, the device will not read NFC tags or receive data.

Making a purchase with the NFC feature

Before you can use the NFC feature to make payments, you must register for the mobile payment service. To register or get more information about the service, contact your service provider.

On the Apps screen, tap **Settings** → **NFC**, and then tap the **NFC** switch to activate it.

Touch the NFC antenna area on the back of your device to the NFC card reader.

To set the default payment app, tap **Tap and pay** and select an app.



The payment services list may not include all available payment apps.

Sending data

Use the Android Beam feature to send data, such as webpages and contacts, to NFC-enabled devices.

- 1 On the Apps screen, tap **Settings** → **NFC**, and then tap the **NFC** switch to activate it.
- 2 Tap **Android Beam** and tap the **Android Beam** switch to activate it.
- 3 Select an item and touch the other device's NFC antenna to your device's NFC antenna.
- 4 When **Touch to beam** appears on the screen, tap your device's screen to send the item.

Mobile printing

Connect the device to a printer via Wi-Fi or Wi-Fi Direct, and print images or documents.



Some printers may not be compatible with the device.

Adding printer plug-ins

Add printer plug-ins for printers you want to connect the device to.

On the Apps screen, tap **Settings** → **Printing** → **Download plug-in**, and search for a printer plug-in in **Play Store**. Select a printer plug-in and install it.

Connecting to a printer

On the Apps screen, tap **Settings** → **Printing**, select a printer plug-in, and then tap the switch at the top right of the screen to activate it. The device searches for printers that are connected to the same Wi-Fi network as your device. Select a printer to use as the default printer.

To add printers manually, select a printer plug-in, tap **⋮** → **Add printer** → **+**, enter details, and then tap **OK**.

To change print settings, select a printer plug-in and tap **⋮** → **Printing settings**.

Printing content

While viewing content, such as images or documents, tap **⋮** → **Print**, and then select a printer.

Device & data manager

Upgrading the device

The device can be upgraded to the latest software.

Upgrading over the air

The device can be directly upgraded to the latest software by the firmware over-the-air (FOTA) service.

On the Apps screen, tap **Settings** → **About device** → **Software update** → **Update**.

Upgrading with Samsung Kies

Download the latest version of Samsung Kies from the Samsung website. Launch Samsung Kies and connect the device to the computer. Samsung Kies automatically recognises the device and shows available updates in a dialogue box, if any. Click the Update button in the dialogue box to start upgrading. Refer to the Samsung Kies help for more information about how to upgrade.



- Do not turn off the computer or disconnect the USB cable while the device is upgrading.
- While upgrading the device, do not connect other media devices to the computer. Doing so may interfere with the update process.

Transferring files between the device and a computer

Move audio, video, image, or other types of files from the device to the computer, or vice versa.



Do not disconnect the USB cable from the device when you are transferring files. Doing so may cause data loss or device damage.



- Do not disconnect the device from the computer when you play files saved in the device on the connected computer. After you finish playing the file, disconnect the device from the computer.
- The devices may not connect properly if they are connected via a USB hub. Directly connect the device to the computer's USB port.

Connecting as a media device

- 1 Connect the device to the computer using the USB cable.
- 2 Open the notifications panel, and then tap **Connected as a media device** → **Media device (MTP)**.
Tap **Camera (PTP)** if your computer does not support Media Transfer Protocol (MTP) or not have any appropriate driver installed.
- 3 Transfer files between your device and the computer.

Connecting with Samsung Kies

Samsung Kies is a computer app that manages media contents and personal information with Samsung devices. Download the latest Samsung Kies from the Samsung website.

- 1 Connect the device to the computer using the USB cable.
Samsung Kies launches on the computer automatically. If Samsung Kies does not launch, double-click the Samsung Kies icon on the computer.
- 2 Transfer files between your device and the computer.
Refer to the Samsung Kies help for more information.

Backing up and restoring data

Keep your personal information, app data, and settings safe on your device. You can back up your sensitive information to a backup account and access it later.

Using a Google account

- 1 Tap **Settings** on the Apps screen.
- 2 Tap **Backup and reset** and tick **Back up my data**.
- 3 Tap **Backup account** and select an account as the backup account.



To restore data, you must sign in to your Google account via the setup wizard. You can launch and open the setup wizard by performing a factory data reset on the device. If you do not sign in to your Google account via the setup wizard, you cannot restore the backup data.

Using a Samsung account

- 1 On the Apps screen, tap **Settings** → **Add account** → **Samsung account**, and then sign in to your Samsung account.
- 2 Tap **Settings** on the Apps screen.
- 3 Tap **Samsung account** → **Backup**, tick the items to back up, and then tap **Back up now** → **Back up**.



To restore data, open the Apps screen, tap **Settings** → **Samsung account** → **Restore**, select the items, and then tap **Restore now**.

Performing a data reset

Delete all settings and data on the device. Before performing a factory data reset, ensure you back up all important data stored on the device. Refer to [Backing up and restoring data](#) for more information.

On the Apps screen, tap **Settings** → **Backup and reset** → **Factory data reset** → **Reset device** → **Erase everything**. The device automatically restarts.

Settings

About Settings

Use this app to configure the device, set app options, and add accounts.

Tap **Settings** on the Apps screen.

WIRELESS AND NETWORKS

Wi-Fi

Activate the Wi-Fi feature to connect to a Wi-Fi network and access the Internet or other network devices.

On the Settings screen, tap **Wi-Fi**, and then tap the **Wi-Fi** switch to activate it.

The device can maintain a stable network connection by automatically selecting either the Wi-Fi or mobile network to use the strongest signal. To automatically switch between networks, tick **Smart network switch**.

To use options, tap .

- **Scan:** Search for available networks.
- **Wi-Fi Direct:** Activate Wi-Fi Direct and connect devices directly via Wi-Fi to share files.
- **Advanced:** Customise Wi-Fi settings.
- **WPS push button:** Connect to a secured Wi-Fi network with a WPS button.
- **WPS PIN entry:** Connect to a secured Wi-Fi network with a WPS PIN.

Setting Wi-Fi sleep policy

Tap  → **Advanced** → **Keep Wi-Fi on during sleep**.



When the screen is turned off, the device automatically turns off Wi-Fi connections. When this happens, the device automatically accesses mobile networks if it is set to use them. This may incur data transfer fees. To avoid additional charges, set this option to **Always**.

Setting Network notification

The device can detect open Wi-Fi networks and display an icon on the status bar to notify when available.

Tap  → **Advanced** and tick **Network notification** to activate this feature.

Bluetooth

Activate the Bluetooth feature to exchange information over short distances.

On the Settings screen, tap **Bluetooth**, and then tap the **Bluetooth** switch to activate it.

To use more options, tap .

- **Visibility timeout:** Set duration that the device is visible.
- **Received files:** View received files via Bluetooth.

Tethering and Mobile hotspot

Use the device as a mobile hotspot to share the device's mobile data connection with other devices. Refer to [Tethering and Mobile hotspot](#) for more information.

On the Settings screen, tap **Tethering and Mobile hotspot**.

- **Mobile hotspot:** Use the mobile hotspot to share the device's mobile data connection with computers or other devices through the Wi-Fi network. You can use this feature when the network connection is not available.

- **USB tethering:** Use USB tethering to share the device's mobile data connection with a computer via USB. When connected to a computer, the device is used as a wireless modem for the computer.
- **Bluetooth tethering:** Use Bluetooth tethering to share the device's mobile data connection with computers or other devices via Bluetooth.

Flight mode

This disables all wireless functions on your device. You can use only non-network services.

On the Settings screen, tap **Flight mode**.

Data usage

Keep track of your data usage amount and customise the settings for the limitation.

On the Settings screen, tap **Data usage**.

- **Mobile data:** Set the device to use data connections on any mobile network.
- **Set mobile data limit:** Set a limit for mobile data usage.
- **Data usage cycle:** Set a monthly reset date to monitor data usage between periods.

To use more options, tap .

- **Data roaming:** Set the device to use data connections when you are roaming.
- **Restrict background data:** Set the device to disable sync in the background while using a mobile network.
- **Auto sync data:** Activate or deactivate auto-syncing of apps, such as calendar or email. You can select what information to sync for each account in **Settings** → **ACCOUNTS**.
- **Show Wi-Fi usage:** Set the device to show your data usage via Wi-Fi.
- **Mobile hotspots:** Select mobile hotspots to prevent apps that are running in the background from using them.

NFC

Activate the NFC feature to read or write NFC tags that contain information.

On the Settings screen, tap **NFC**, and then tap the **NFC** switch to activate it.

- **Android Beam:** Turn on the Android Beam feature to send data, such as webpages and contacts, to NFC-enabled devices.
- **Tap and pay:** Set the default payment app for mobile payments.



The payment services list may not include all available payment apps.

More networks

Customise settings to control networks.

On the Settings screen, tap **More networks**.

Default messaging app

Select the default app to use for messaging.

VPN

Set up and connect to virtual private networks (VPNs).

Mobile networks

- **Mobile data:** Set the device to use data connections on any mobile network.
- **Data roaming:** Set the device to use data connections when you are roaming.
- **Access Point Names:** Set up access point names (APNs).
- **Network mode:** Select a network type.
- **Network operators:** Search for available networks and select a network for roaming.

DEVICE

Lock screen

Change the settings for the locked screen.

On the Settings screen, tap **Lock screen**.

- **Screen lock:** Change the screen lock method. The following options may vary depending on the screen lock method selected.
- **Dual clock:** Set the device to show the dual clock.
- **Show date:** Set the device to show the date with the clock.
- **Camera shortcut:** Set the device to show the camera shortcut on the locked screen.



This feature may not be available depending on the region or service provider.

- **Owner information:** Enter your information that is shown with the clock.
- **Unlock effect:** Select an effect that you see when you unlock the screen.
- **Help text:** Set the device to show the help text on the locked screen.

Sound

Change settings for various sounds on the device.

On the Settings screen, tap **Sound**.

- **Volume:** Adjust the volume level for call ringtones, music and videos, system sounds, and notifications.
- **Ringtones:**
 - **Ringtones:** Add or select a ringtone for incoming calls.
 - **Notifications:** Select a ringtone for events, such as incoming messages and missed calls.
- **Vibrate when ringing:** Set the device to vibrate and play a ringtone for incoming calls.
- **Dialling keypad tone:** Set the device to sound when you tap the buttons on the keypad.

- **Touch sounds:** Set the device to sound when you select an app or option on the touch screen.
- **Screen lock sound:** Set the device to sound when you lock or unlock the touch screen.

Display

Change the display settings.

On the Settings screen, tap **Display**.

- **Wallpaper:**
 - **Home screen:** Select a background image for the Home screen.
 - **Lock screen:** Select a background image for the locked screen.
 - **Home and lock screens:** Select a background image for the Home screen and the locked screen.
- **Notification panel:** Customise the items that appear on the notifications panel.
 - **Brightness adjustment:** Set the device to display the brightness adjustment bar on the notifications panel.
 - **Set the quick setting buttons:** Rearrange the quick setting buttons displayed on the notifications panel.
- **Brightness:** Set the brightness of the display.
- **Auto rotate screen:** Set the content to rotate automatically when the device is turned.
- **Screen timeout:** Set the length of time the device waits before turning off the display's backlight.
- **Daydream:** Set the device to launch a screensaver when the device is charging or connected to a desktop dock.
- **Font style:** Change the font type for display text.
- **Font size:** Change the font size.
- **Increase legibility:** Sharpen the text to make it easier to read.

Call

Customise the settings for calling features.

On the Settings screen, tap **Call**.

- **Set up call reject messages:** Add or edit the message sent when you reject a call.
- **Answering/ending calls:**
 - **The home key answers calls:** Set the device to answer a call when you press the Home button.
 - **The power key ends calls:** Set the device to end a call when pressing the Power button.
- **Additional settings:**
 - **Caller ID:** Display your caller ID to other parties for outgoing calls.
 - **Call forwarding:** Divert incoming calls to another number.
 - **Auto area code:** Set the device to automatically insert a prefix (area or country code) before a phone number.
 - **Call barring:** Block incoming or outgoing calls.
 - **Call waiting:** Allow incoming call alerts when a call is in progress.
 - **Fixed Dialling Numbers:** Activate or deactivate FDN mode to restrict calls to numbers in the FDN list. Enter the PIN2 supplied with your SIM or USIM card.
- **Ringtones and keypad tones:**
 - **Ringtones:** Add or select a ringtone for incoming calls.
 - **Vibrate when ringing:** Set the device to vibrate and play a ringtone for incoming calls.
 - **Dialling keypad tone:** Set the device to sound when buttons on the keypad are tapped.
- **Voicemail service:** Select your voicemail service provider.
- **Voicemail settings:** Enter the number to access the voicemail service. Obtain this number from the service provider.

Storage

View memory information for your device and memory card, or format a memory card.

On the Settings screen, tap **Storage**.



Formatting a memory card permanently deletes all data from it.



The actual available capacity of the internal memory is less than the specified capacity because the operating system and default apps occupy part of the memory. The available capacity may change when you upgrade the device.

Battery

View the amount of battery power consumed by your device.

On the Settings screen, tap **Battery**.

Application manager

View and manage the apps on your device.

On the Settings screen, tap **Application manager**.

PERSONAL

Location

Change settings for location information permissions.

On the Settings screen, tap **Location**, and then tap the **Location** switch to activate it.

- **Mode:** Select a method to collect your location data.
- **RECENT LOCATION REQUESTS:** View which apps request your current location information and their battery usage.
- **LOCATION SERVICES:** View the location services your device is using.

Security

Change settings for securing the device and the SIM or USIM card.

On the Settings screen, tap **Security**.

- **Encrypt device:** Set a password to encrypt data saved on the device. You must enter the password each time you turn on the device.



Charge the battery before enabling this setting because it may take more than an hour to encrypt your data.

- **Encrypt external SD card:** Set the device to encrypt files on a memory card.



If you reset your device to the factory defaults with this setting enabled, the device will not be able to read your encrypted files. Disable this setting before resetting the device.

- **Remote controls:** Set the device to allow control of your lost or stolen device remotely via the Internet. To use this feature, you must sign in to your Samsung account.
 - **ACCOUNT REGISTRATION:** Add or view your Samsung account.
 - **Use wireless networks:** Set the device to allow location data collection or to determine the location of your lost or stolen device via Wi-Fi or mobile network.
- **SIM Change Alert:** Activate or deactivate the Find my mobile feature which helps locate the device when lost or stolen.

- **Go to website:** Access the Find my mobile website (findmymobile.samsung.com). You can track and control your lost or stolen device from the Find my mobile website.
- **Set up SIM card lock:**
 - **Lock SIM card:** Activate or deactivate the PIN lock feature to require the PIN before using the device.
 - **Change SIM PIN:** Change the PIN used to access SIM or USIM data.
- **Make passwords visible:** Set the device to display passwords as they are entered.
- **Device administrators:** View device administrators installed on the device. You can allow device administrators to apply new policies to the device.
- **Unknown sources:** Set the device to allow the installation of apps from unknown sources.
- **Verify apps:** Set the device to check the apps for harmful content before installing them.
- **Security update:** Set the device to check and download security updates.
- **Storage type:** Set a storage type for credential files.
- **Trusted credentials:** Use certificates and credentials to ensure secure use of various apps.
- **Install from device storage:** Install encrypted certificates stored on the USB storage.
- **Clear credentials:** Erase the credential contents from the device and reset the password.

Language and input

Change the settings for text input. Some options may not be available depending on the selected language.

On the Settings screen, tap **Language and input**.

Language

Select a display language for all menus and apps.

Default

Select a default keyboard type for text input.

Samsung keyboard


To change the Samsung keyboard settings, tap .



The available options may vary depending on the region or service provider.

- **English(UK):** Select a default keyboard layout.
- **Select input languages:** Select languages for text input.
- **Predictive text:** Activate predictive text mode to predict words based on your input and show word suggestions. You can also customise the word prediction settings.
- **Auto replacement:** Set the device to correct misspelled and incomplete words by tapping the space bar or punctuation mark.
- **Auto capitalisation:** Set the device to automatically capitalise the first character after a final punctuation mark, such as a full stop, question mark, or exclamation mark.
- **Auto spacing:** Set the device to automatically insert a space between words.
- **Auto-punctuate:** Set the device to insert a full stop when you double-tap the space bar.
- **Keyboard swipe:**
 - **None:** Set the device to deactivate the keyboard swipe feature.
 - **Continuous input:** Set the device to enter text by sweeping on the keyboard.
 - **Cursor control:** Enable the smart keyboard navigation feature to move the cursor by scrolling the keyboard.
 - **Flick input:** Enable or disable the keyboard to enter numbers or symbols when you tap and hold a key, and then flick your finger upwards.
- **Sound:** Set the device to sound when a key is touched.
- **Character preview:** Set the device to display a large image of each character tapped.
- **Tap and hold delay:** Set the recognition time for tapping and holding the screen.
- **Reset settings:** Reset Samsung keyboard settings.

Google voice typing

To change the voice input settings, tap .

- **Choose input languages:** Select languages for text input.
- **Block offensive words:** Set the device to prevent the device from recognising offensive words in voice inputs.

Voice search


- **Language:** Select a language for voice recognition.
- **“Ok Google” hotword detection:** Set the device to begin voice recognition when you say the wake-up command while using the search app.



This feature may not be available depending on the region or service provider.

- **Speech output:** Set the device to provide voice feedback to alert you to the current action.
- **Block offensive words:** Hide offensive words from voice search results.
- **Personalised recognition:** Set the device to use information from your Google dashboard to improve speech recognition accuracy.
- **Bluetooth headset:** Set the device to allow voice input of search keywords via the Bluetooth headset microphone when a Bluetooth headset is connected.

Text-to-speech options

- **PREFERRED TTS ENGINE:** Select a speech synthesis engine. To change the settings for speech synthesis engines, tap .
- **Speech rate:** Select a speed for the text-to-speech feature.
- **Listen to an example:** Listen to the spoken text for an example.
- **Default language status:** View the status of the default language for the text-to-speech feature.

Pointer speed

Adjust the pointer speed for the mouse or trackpad connected to your device.

Backup and reset

Change the settings for managing settings and data.

On the Settings screen, tap **Backup and reset**.

- **Back up my data:** Set the device to back up settings and app data to the Google server.
- **Backup account:** Set up or edit your Google backup account.
- **Automatic restore:** Set the device to restore settings and app data when the apps are reinstalled on the device.
- **Factory data reset:** Reset settings to the factory default values and delete all data.

ACCOUNTS

Add account

Add email or SNS accounts.

On the Settings screen, tap **Add account**.

SYSTEM

Date and time

Access and alter the following settings to control how the device displays the time and date.

On the Settings screen, tap **Date and time**.



If the battery remains fully discharged or removed from the device, the time and date is reset.

- **Automatic date and time:** Automatically update the time and date when moving across time zones.
- **Automatic time zone:** Set the device to receive time zone information from the network when you move across time zones.

- **Set date:** Set the current date manually.
- **Set time:** Set the current time manually.
- **Select time zone:** Set the home time zone.
- **Use 24-hour format:** Display time in 24-hour format.
- **Select date format:** Select a date format.

Accessibility

Use this feature to improve accessibility to the device. Refer to [About Accessibility](#) for more information.

On the Settings screen, tap **Accessibility**.

Printing

Download a printer app to print files.

On the Settings screen, tap **Printing**.

About device

Access device information, edit the device name, or update device software.

On the Settings screen, tap **About device**.

Accessibility

About Accessibility

Accessibility menus are special features for those with certain physical disabilities, such as poor eyesight or hearing impairment.

[Setting the accessibility shortcut](#)

[Voice feedback \(TalkBack\)](#)

[Changing the font size](#)

[Magnifying the screen](#)

[Turning off all sounds](#)

[Mono audio](#)

[Setting tap and hold delay options](#)

[Interaction control](#)

[Auto rotate screen](#)

[Screen timeout](#)

[Answering or ending calls](#)

[Using other useful features](#)

To use accessibility menus, open the Apps screen and tap **Settings** → **Accessibility**.

Setting the accessibility shortcut

You can view accessibility menus quickly by pressing and holding the Power button.

On the Apps screen, tap **Settings** → **Accessibility** → **Show shortcut**, tick **Accessibility** or **TalkBack**, and then tap **Apply**.

Voice feedback (TalkBack)

Activating or deactivating TalkBack

When you activate TalkBack, the device reads aloud the text on the screen or selected features. This feature is useful if you have difficulty viewing the screen.

- 1 On the Apps screen, tap **Settings** → **Accessibility** → **TalkBack**.
- 2 Tap the **TalkBack** switch to activate it.
To deactivate TalkBack, tap the **TalkBack** switch and tap anywhere on the screen twice quickly.
- 3 Tap **OK**.
To deactivate TalkBack, tap **OK** and tap anywhere on the screen twice quickly.

When you activate TalkBack, the device provides voice feedback and reads aloud the features you select. Also, the device provides voice feedback when the screen turns off, when you have new notifications, and more.

When you activate **Explore by touch** while using TalkBack, the device reads selected items aloud. Firstly, the device reads aloud items on the screen when you tap them. Then, the device will perform the function or open the app if you tap anywhere on the screen twice quickly. If **Explore by touch** is deactivated, the device cannot perform various features that require finger gestures.

To activate **Explore by touch**, open the Apps screen, tap **Settings** → **Accessibility** → **TalkBack** → **Settings**, and then tick **Explore by touch**.



Some features are not available while you are using TalkBack.

Controlling the screen with finger gestures

You can use various finger gestures to control the screen while you are using TalkBack. If **Explore by touch** is deactivated, the device cannot perform some of the features that require finger gestures.

To activate **Explore by touch**, open the Apps screen, tap **Settings** → **Accessibility** → **TalkBack** → **Settings**, and then tick **Explore by touch**.

- Exploring the screen: Place a finger on the screen and move your finger to explore the screen. Select and hold on an item and the device reads aloud the item. When you release your finger, the item under your finger is selected.
- Selecting items: Tap an item to select it. Or, select and hold on an item while exploring the screen, and then release your finger.
- Opening the selected item: While selected items are read aloud, when you hear the item you want, release your finger from the item. Then, tap anywhere on the screen twice quickly.
- Selecting the previous item: Scroll quickly upwards or to the left on the screen with one finger.
- Selecting the next item: Scroll quickly downwards or to the right on the screen with one finger.
- Scrolling the lists: Scroll the screen upwards or downwards with two fingers.
- Returning to the previous page: Scroll the screen to the right with two fingers.
- Moving to the next page: Scroll the screen to the left with two fingers.
- Unlocking the screen: Scroll the screen in any direction within the locked screen area with two fingers.
- Opening the notifications panel: Drag the top of the screen downwards with two fingers.

You can configure finger gesture settings for TalkBack in **Manage gestures**. Refer to [Configuring finger gesture settings](#) for more information.

Configuring finger gesture settings

When you use TalkBack, you can perform actions using finger gestures. You can perform actions such as, returning to the previous screen, opening the Home screen, and more. Configure finger gestures before using them.

Configuring settings for vertical gestures

You can use two-part vertical gestures by dragging your finger upwards and downwards from the bottom of the screen, or vice versa.

On the Apps screen, tap **Settings** → **Accessibility** → **TalkBack** → **Settings** → **Manage gestures** → **Two-part vertical gestures**. Then, select one of the following features:

- **Move to the first and last items on screen:** When you drag your finger upwards and then downwards on the screen, the first item at the top of the screen is selected. When you drag your finger downwards and then upwards on the screen, the last item at the bottom of the screen is selected.
- **Cycle through reading granularities:** When you drag your finger upwards and then downwards on the screen, the reading unit changes. The reading unit changes to page, paragraph, line, word, character, and default. When you drag your finger downwards and then upwards on the screen, the reading units change in reverse order.

Configuring settings for shortcut gestures

Use this feature to configure eight shortcut gestures. You can configure gestures such as, dragging your finger upwards and then to the right without releasing it, and more. You can change shortcut gestures or assign features to empty shortcuts.

On the Apps screen, tap **Settings** → **Accessibility** → **TalkBack** → **Settings** → **Manage gestures**. Select a gesture, and then assign a feature to it.

The following features are available:

- **Back button:** Return to the previous screen.
- **Home button:** Open the Home screen.
- **Recent apps button:** Open the list of recently-used apps.

- **Open notifications:** Open the notifications panel.
- **Open global context menu:** Open the global contextual menu. Tap and hold the screen to open the circular global contextual menu. You can use features, such as **Quick navigation**, **Read from top**, **Spell last utterance**, and **Read from next item**. Then, explore menus by drawing a circle with your finger without releasing it. When you find the menu you want, release your finger from the menu to select it.

Tap **Pause feedback** at the top left of the screen to pause voice feedback.

Tap **TalkBack Settings** at the top right of the screen to access the TalkBack settings. Refer to [Configuring settings for TalkBack](#) for more information.

- **Open local context menu:** Open the local contextual menu. You can select a unit for reading text on the screen. When you use this feature while entering text, contextual menus, such as the cursor control menu, are available. Tap and hold the screen to open the circular contextual menu. Then, explore menus by drawing a circle with your finger without releasing it. When you find the menu you want, release your finger from the menu to select it.
- **Read from top:** Read items aloud from the first item to the last item in order.
- **Read from next item:** Read items aloud starting from the item next to the selected item in order.

Changing reading units

When you use TalkBack, you can listen to the text on the screen. You can drag your finger up, down, left, or right to select the text you want. By default, the device reads text aloud in the selected area. Or, you can set the device to read text in other reading units, such as lines or paragraphs.

Changing reading units by using the local contextual menu

- 1 Select some text to read.
- 2 Drag your finger upwards, and then to the right without releasing it to open the local contextual menu.

- 3 Tap and hold the screen and draw a circle with your finger to explore menus. Then, release your finger when you hear **Change granularity**.
- 4 Tap and hold the screen again and draw a circle with your finger to explore menus. Then, release your finger when you hear the reading unit you want.

To change the shortcut gesture to open the local contextual menu, refer to [Configuring settings for shortcut gestures](#).

Changing reading units using two-part vertical gestures

When you drag your finger upwards and then downwards on the screen, the reading unit changes. The reading unit changes to page, paragraph, line, word, character, and then default. When you drag your finger downwards and then upwards on the screen, the reading units change in reverse order.

On the Apps screen, tap **Settings** → **Accessibility** → **TalkBack** → **Settings** → **Manage gestures** → **Two-part vertical gestures** → **Cycle through reading granularities**.

You can listen to the text next to the currently-selected text using the current reading unit. To listen to the next section of text, drag your finger downwards or to the right on the screen. Also, you can listen to the text before the currently-selected text using the current reading unit. To listen to the previous section of text, drag your finger upwards or to the left on the screen.

Pausing TalkBack

Open the global contextual menu by dragging your finger downwards and then to the right on the screen without releasing it. When you select **Pause feedback** at the top left of the screen, TalkBack pauses.

When TalkBack is paused, you can resume it by turning on the screen or other methods. To change the method of resuming TalkBack, open the Apps screen and tap **Settings** → **Accessibility** → **TalkBack** → **Settings** → **Resume from suspend**. Then, select an option.

To change the shortcut gesture to open the global contextual menu, refer to [Configuring settings for shortcut gestures](#).

Using the quick navigation feature

With the quick navigation feature, you can access menus by drawing a circle on the screen without scrolling up or down to select an item.

Open the global contextual menu by dragging your finger downwards and then to the right on the screen without releasing it. Tap and hold the screen and draw a circle around the menu with your finger to explore the menus. Then, release your finger when you hear **Quick navigation**. Tap the screen again and draw a circle around the menu with your finger to explore the menus. Then, release your finger when you hear the menu you want.

Adding and managing image labels

You can assign labels to images on the screen. The device reads aloud the labels when the images are selected. Add labels to unlabelled images by using the local contextual menu.

Open the local contextual menu by dragging your finger upwards and then to the right on the screen without releasing it. Tap and hold the screen and draw a circle around the menu with your finger to explore the menus. When you hear the add label menu, release your finger to add labels.

To view the labels, open the Apps screen and tap **Settings** → **Accessibility** → **TalkBack** → **Settings** → **Manage customised labels**.

Configuring settings for TalkBack

Configure settings for TalkBack for your convenience.

On the Apps screen, tap **Settings** → **Accessibility** → **TalkBack** → **Settings**. Alternatively, open the global contextual menu by dragging your finger downwards and then to the right on the screen without releasing it. Then, drag your finger to the top right of the screen and release it when you hear **TalkBack Settings**.

- **Speech volume:** Adjust the volume level for voice feedback.

Voice feedback volume can vary depending on the media volume. To adjust the media volume, press the Volume button up or down while listening to voice feedback.

Alternatively, on the Apps screen, tap **Settings** → **Sound** → **Volume**, and then drag the volume adjustment bar for the media content to the left or right.

- **Use pitch changes:** Set the device to read aloud text at a low pitch when it is entered using a keyboard.
- **Keyboard echo:** Set the device to read aloud text or symbols entered using a keyboard. You can also set the type of keyboard to apply this feature to.
- **Speak when screen is off:** Set the device to provide voice feedback when the screen is turned off.
- **Shake to start continuous reading:** Set the device to read aloud the text displayed on the screen when you shake the device. You can select from various shaking speeds.
- **Speak caller ID:** Set the device to read the caller's name aloud when you have an incoming call.
- **Vibration feedback:** Set the device to vibrate when you explore the screen.
- **Sound feedback:** Set the device to emit a sound when you control the screen, such as scrolling the screen, and more.
- **Focus speech audio:** Set the device to turn the media volume down when the device reads an item aloud.
- **Sound volume:** Adjust the volume that sound is played when you touch the screen to control it. This feature is available when **Sound feedback** is selected.
- **Explore by touch:** Set the device to read aloud the items under your finger. Move your finger anywhere on the screen to find the item you want. When you hear the item you want, release your finger from it and tap anywhere on the screen twice quickly to open it. You can move to the page you want by scrolling the screen left or right with two fingers. To learn about controlling the screen using the explore by touch feature, refer to [Controlling the screen with finger gestures](#) for more information.
- **Automatically scroll lists:** Set the device to automatically scroll through the rest of the list not displayed on the screen and read the items aloud.
- **Single-tap selection:** Set the device to open the selected item by tapping it once.
- **Launch "Explore by touch" tutorial:** View the tutorial about using the Explore by touch feature.

- **Manage gestures:** Assign actions to perform using finger gestures. Refer to [Configuring finger gesture settings](#) for more information.
- **Manage customised labels:** View the labels you added.
- **Resume from suspend:** Select a method to resume voice feedback.
- **Developer settings:** Set options for app development.

Reading passwords aloud


Set the device to read the password aloud when you enter the password while TalkBack is activated. Use this feature to make sure that you are entering the right password.

On the Apps screen, tap **Settings** → **Accessibility**, and then tick **Speak passwords**.

Setting text-to-speech features

Change the settings for text-to-speech features used when TalkBack is activated, such as languages, speed, and more.

On the Apps screen, tap **Settings** → **Accessibility** → **Text-to-speech options**, and then use the following functions:

- **Samsung text-to-speech engine / Google Text-to-speech engine:** Select an engine for the text-to-speech feature.
- **Speech rate:** Select a speed for the text-to-speech feature.
- **Listen to an example:** Listen to the spoken text for an example. If the device cannot read examples aloud, tap  → **Install voice data** to download and install voice data for the text-to-speech feature.
- **Default language status:** View the status of the current language set for the text-to-speech feature.

Entering text using the keyboard


To display the keyboard, tap the text input field, and then tap anywhere on the screen twice quickly.

When you touch the keyboard with your finger, the device reads aloud the character buttons under your finger. When you hear the character you want, release your finger from the screen to select it. The character is entered and the device reads the text aloud.

Entering additional characters

Tap and hold a button on the keyboard. If additional characters are available via the button, a pop-up window appears above the keyboard showing the characters. To select a character, drag your finger on the screen until you hear the character you want, and then release it.

Changing the input language

To add input languages, open the Apps screen and tap **Settings** → **Language and input**. Then, tap  next to **Samsung keyboard** → **Select input languages** and select the languages to use.

To change the input language, tap , and then tap anywhere on the screen twice quickly.

Editing text

Use the local contextual menu to move the cursor or copy and paste text.

Open the local contextual menu by dragging your finger upwards and then to the right on the screen without releasing it. Tap and hold the screen and draw a circle around the menu with your finger to explore the menu. Then, release your finger when you hear **Change granularity**. Tap the screen again and draw a circle around the menu to explore the menus. Then release your finger when you hear the reading unit you want.



When you edit text, set the reading unit to either word or character for your convenience. In selection mode, the device selects text according to the reading unit you selected.

Drag your finger up, down, left, or right to listen to the text. When the text you want to edit is read aloud, use the following actions:

- Deleting text: Tap the delete button on the keyboard.
- Selecting text using selection mode: Activate selection mode to select and listen to the text. To activate selection mode, open the local contextual menu and select **Cursor control** → **Start selection mode**. Scroll to the left or right to listen to the text before or next to the currently-selected text. To deactivate selection mode, open the local contextual menu and select **Cursor control** → **End selection mode**.
- Selecting entire text: Open the local contextual menu and select **Cursor control** → **Select all**. All text in the document will be selected.
- Copying or cropping text: Select text using the local contextual menu. Then, open the local contextual menu and select **Cursor control**. Select **Copy** to copy the selected text or select **Cut** to cut the selected text. The selected text is copied to the clipboard.
- Pasting text: Place the cursor at the point where the text should be inserted, open the local contextual menu, and then select **Cursor control** → **Paste**.

Entering text by voice

You can enter text by voice. To display the keyboard, tap the text input field, and then tap anywhere on the screen twice quickly.

When you tap and hold , the device displays a pop-up window showing the keyboard options. Drag your finger on the screen without releasing it. When  is selected, release your finger. Then, say the words that you want to enter in the text field. The spoken words appear as text on the screen and the device reads them aloud.

To enter additional text, select the microphone button and say the words.

Changing the input language

While entering text by voice, select **English (UK)** and select a language to change the input language.

To add languages to the list, select **English (UK)** → **Add more languages**, deselect **Automatic**, and then select languages to use.

Changing the font size

Use this feature to change the font size. The device provides various font sizes to make the device more convenient for visually impaired users. Setting the font size to **Huge** may not be available in some apps.

On the Apps screen, tap **Settings** → **Accessibility** → **Font size**.

Magnifying the screen

Use this feature to magnify the screen and to zoom in on a specific area.

On the Apps screen, tap **Settings** → **Accessibility** → **Magnification gestures**, and then tap the **Magnification gestures** switch to activate it.

- **Zooming in and out:** Tap the screen three times quickly to zoom in on a specific area. Tap the screen three times quickly again to return.
- **Exploring the screen by scrolling:** Use two fingers to scroll through the magnified screen.
- **Adjusting zoom ratio:** Tap the screen with two fingers on the magnified screen. Then, spread two fingers apart or pinch them together to adjust the ratio.



- Keyboards on the screen cannot be magnified.
- When this feature is activated, the performance of some apps, such as **Phone** and **Calculator**, may be affected.

Turning off all sounds

Set the device to mute all device sounds, such as media sounds, and the caller's voice during a call.

On the Apps screen, tap **Settings** → **Accessibility**, and then tick **Turn off all sounds**.

Mono audio

Set the device to switch the sound output from stereo to mono when a headset is connected. Mono output combines stereo sound into one signal that is played through all headset speakers. Use this if you have a hearing impairment or if a single earbud is more convenient.

On the Apps screen, tap **Settings** → **Accessibility**, and then tick **Mono audio**.

Setting tap and hold delay options

Set the recognition time for tapping and holding the screen.

On the Apps screen, tap **Settings** → **Accessibility** → **Touch & hold delay**, and then select an option.

Interaction control

Activate interaction control mode to restrict the device's reaction to inputs while using apps. Use this mode when you want to allow others only limited access to and control of your media or data.

- 1 On the Apps screen, tap **Settings** → **Accessibility** → **Interaction control**.
- 2 Tap the **Interaction control** switch to activate it.
- 3 Press and hold the Home button and the Volume button down simultaneously while using an app.
- 4 Adjust the size of the frame or draw a line around an area that you want to restrict.
- 5 Tap **Done**.

The device displays the restricted area. If you tap the screen or press buttons, such as the Home button, they will not work in this area.

To deactivate interaction control mode, press and hold the Home button and the Volume button down simultaneously.

Auto rotate screen

Allow or prevent the interface from rotating automatically when you rotate the device.

To fix the screen in portrait orientation, open the Apps screen, tap **Settings** → **Accessibility**, and then deselect **Auto rotate screen**.

Screen timeout

Set the length of time the device waits before turning off the display's backlight.

On the Apps screen, tap **Settings** → **Accessibility** → **Screen timeout** and select an option.

Answering or ending calls

Change the method of answering or ending calls.

On the Apps screen, tap **Settings** → **Accessibility** → **Answering/ending calls**.

Use the following options:

- **The home key answers calls:** Set the device to answer a call when you press the Home button.
- **The power key ends calls:** Set the device to end a call when you press the Power button.

Using other useful features

- Searching by voice: Use voice commands to search for webpage content. Use this feature when you are on the move and cannot use your hands to enter text.
- Using the notifications panel: Drag the status bar downwards to open the notifications panel. You can view missed calls, new messages, adjust the screen brightness, and more. Refer to [Notifications panel](#) for more information.
- Using shortcuts to contacts: Add shortcuts to contacts on the Home screen to make calls or send messages more conveniently. Refer to [Adding shortcuts for contacts to the Home screen](#) for more information.
- Using the voice recorder: Record or play voice memos. Refer to [Voice Recorder](#) for more information.

Troubleshooting

Before contacting a Samsung Service Centre, please attempt the following solutions. Some situations may not apply to your device.

When you turn on your device or while you are using the device, it prompts you to enter one of the following codes:

- Password: When the device lock feature is enabled, you must enter the password you set for the device.
- PIN: When using the device for the first time or when the PIN requirement is enabled, you must enter the PIN supplied with the SIM or USIM card. You can disable this feature by using the Lock SIM card menu.
- PUK: Your SIM or USIM card is blocked, usually as a result of entering your PIN incorrectly several times. You must enter the PUK supplied by your service provider.
- PIN2: When you access a menu requiring the PIN2, you must enter the PIN2 supplied with the SIM or USIM card. For more information, contact your service provider.

Your device displays network or service error messages

- When you are in areas with weak signals or poor reception, you may lose reception. Move to another area and try again. While moving, error messages may appear repeatedly.
- You cannot access some options without a subscription. For more information, contact your service provider.

Your device does not turn on

- When the battery is completely discharged, your device will not turn on. Fully charge the battery before turning on the device.
- The battery may not be inserted properly. Insert the battery again.
- Wipe both gold-coloured contacts and insert the battery again.

The touch screen responds slowly or improperly

- If you attach a protective cover or optional accessories to the touch screen, the touch screen may not function properly.
- If you are wearing gloves, if your hands are not clean while touching the touch screen, or if you tap the screen with sharp objects or your fingertips, the touch screen may malfunction.
- The touch screen may malfunction in humid conditions or when exposed to water.
- Restart your device to clear any temporary software bugs.
- Ensure that your device software is upgraded to the latest version.
- If the touch screen is scratched or damaged, visit a Samsung Service Centre.

Your device freezes or has fatal errors

If your device freezes or hangs, you may need to close apps or reinsert the battery and turn on the device to regain functionality. If your device is frozen and unresponsive, press and hold the Power button and the Volume button down simultaneously for more than 7 seconds to restart it.

If this does not solve the problem, perform a factory data reset. On the Apps screen, tap **Settings** → **Backup and reset** → **Factory data reset** → **Reset device** → **Erase everything**. Before performing the factory data reset, remember to make backup copies of all important data stored in the device.

If the problem is still not resolved, contact a Samsung Service Centre.

Calls are not connected

- Ensure that you have accessed the right cellular network.
- Ensure that you have not set call barring for the phone number you are dialling.
- Ensure that you have not set call barring for the incoming phone number.

Others cannot hear you speaking on a call

- Ensure that you are not covering the built-in microphone.
- Ensure that the microphone is close to your mouth.
- If using a headset, ensure that it is properly connected.

Sound echoes during a call

Adjust the volume by pressing the Volume button or move to another area.

A cellular network or the Internet is often disconnected or audio quality is poor

- Ensure that you are not blocking the device's internal antenna.
- When you are in areas with weak signals or poor reception, you may lose reception. You may have connectivity problems due to issues with the service provider's base station. Move to another area and try again.
- When using the device while moving, wireless network services may be disabled due to issues with the service provider's network.

The battery icon is empty

Your battery is low. Recharge or replace the battery.

The battery does not charge properly (For Samsung-approved chargers)

- Ensure that the charger is connected properly.
- If the battery terminals are dirty, the battery may not charge properly or the device may turn off. Wipe both gold-coloured contacts and try charging the battery again.
- The batteries in some devices are not user-replaceable. To have the battery replaced, visit a Samsung Service Centre.

The battery depletes faster than when first purchased

- When you expose the battery to very cold or very hot temperatures, the useful charge may be reduced.
- Battery consumption increases when you use messaging features or some apps, such as games or the Internet.
- The battery is consumable and the useful charge will get shorter over time.

Your device is hot to the touch

When you use apps that require more power or use apps on your device for an extended period of time, your device may feel hot to the touch. This is normal and should not affect your device's lifespan or performance.

Error messages appear when launching the camera

Your device must have sufficient available memory and battery power to operate the camera app. If you receive error messages when launching the camera, try the following:

- Charge the battery or replace it with a battery that is fully charged.
- Free some memory by transferring files to a computer or deleting files from your device.
- Restart the device. If you are still having trouble with the camera app after trying these tips, contact a Samsung Service Centre.

Photo quality is poorer than the preview

- The quality of your photos may vary, depending on the surroundings and the photography techniques you use.
- If you take photos in dark areas, at night, or indoors, image noise may occur or images may be out of focus.

Error messages appear when opening multimedia files

If you receive error messages or multimedia files do not play when you open them on your device, try the following:

- Free some memory by transferring files to a computer or deleting files from your device.
- Ensure that the music file is not Digital Rights Management (DRM)-protected. If the file is DRM-protected, ensure that you have the appropriate licence or key to play the file.
- Ensure that the file formats are supported by the device. If a file format is not supported, such as DivX or AC3, install an app that supports it. To confirm the file formats that your device supports, visit www.samsung.com.

- Your device supports photos and videos captured with the device. Photos and videos captured by other devices may not work properly.
- Your device supports multimedia files that are authorised by your network service provider or providers of additional services. Some content circulated on the Internet, such as ringtones, videos, or wallpapers, may not work properly.

Another Bluetooth device is not located

- Ensure that the Bluetooth wireless feature is activated on your device.
- Ensure that the Bluetooth wireless feature is activated on the device you wish to connect to.
- Ensure that your device and the other Bluetooth device are within the maximum Bluetooth range (10 m).

If the tips above do not solve the problem, contact a Samsung Service Centre.

A connection is not established when you connect the device to a computer

- Ensure that the USB cable you are using is compatible with your device.
- Ensure that you have the proper driver installed and updated on your computer.
- If you are a Windows XP user, ensure that you have Windows XP Service Pack 3 or higher installed on your computer.
- Ensure that you have Samsung Kies or Windows Media Player 10 or higher installed on your computer.

Your device cannot find your current location

GPS signals may be obstructed in some locations, such as indoors. Set the device to use Wi-Fi or a mobile network to find your current location in these situations.

Data stored in the device has been lost

Always make backup copies of all important data stored in the device. Otherwise, you cannot restore data if it is corrupted or lost. Samsung is not responsible for the loss of data stored in the device.

A small gap appears around the outside of the device case

- This gap is a necessary manufacturing feature and some minor rocking or vibration of parts may occur.
- Over time, friction between parts may cause this gap to expand slightly.

Copyright

Copyright © 2014 Samsung Electronics

This manual is protected under international copyright laws.

No part of this guide may be reproduced, distributed, translated, or transmitted in any form or by any means, electronic or mechanical, including photocopying, recording, or storing in any information storage and retrieval system, without the prior written permission of Samsung Electronics.

Trademarks

- SAMSUNG and the SAMSUNG logo are registered trademarks of Samsung Electronics.
- Bluetooth® is a registered trademark of Bluetooth SIG, Inc. worldwide.
- Wi-Fi®, Wi-Fi Protected Setup™, Wi-Fi Direct™, Wi-Fi CERTIFIED™, and the Wi-Fi logo are registered trademarks of the Wi-Fi Alliance.
- All other trademarks and copyrights are the property of their respective owners.